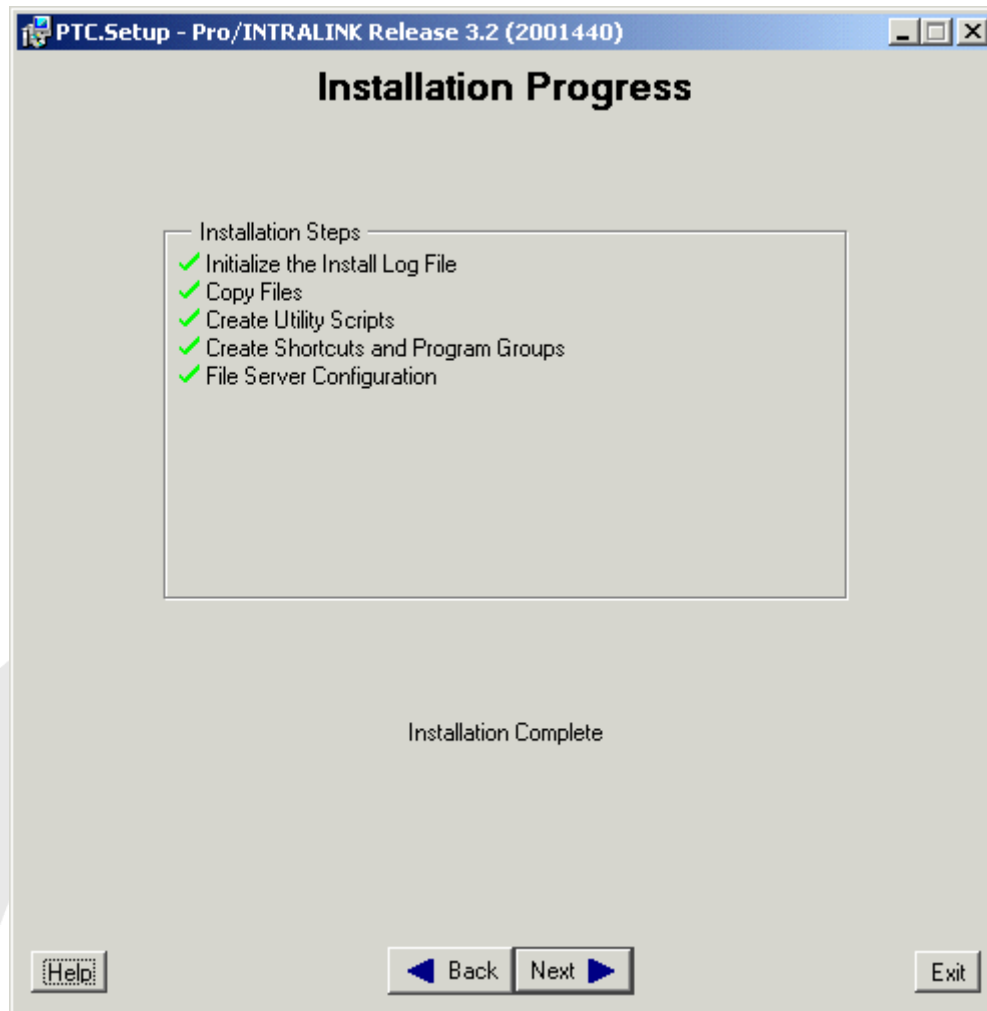


*It can be fixed rather easily. First of all re-booting the machine will fix the problem. If you do not wish to reboot the machine, you can fix the problem manually. Open the services from the Control Panel and highlight the Intralink Fileserver service. Open the service properties, and enter in [7777] (or appropriate port) as a Start Parameter and manually start the service. \*\**

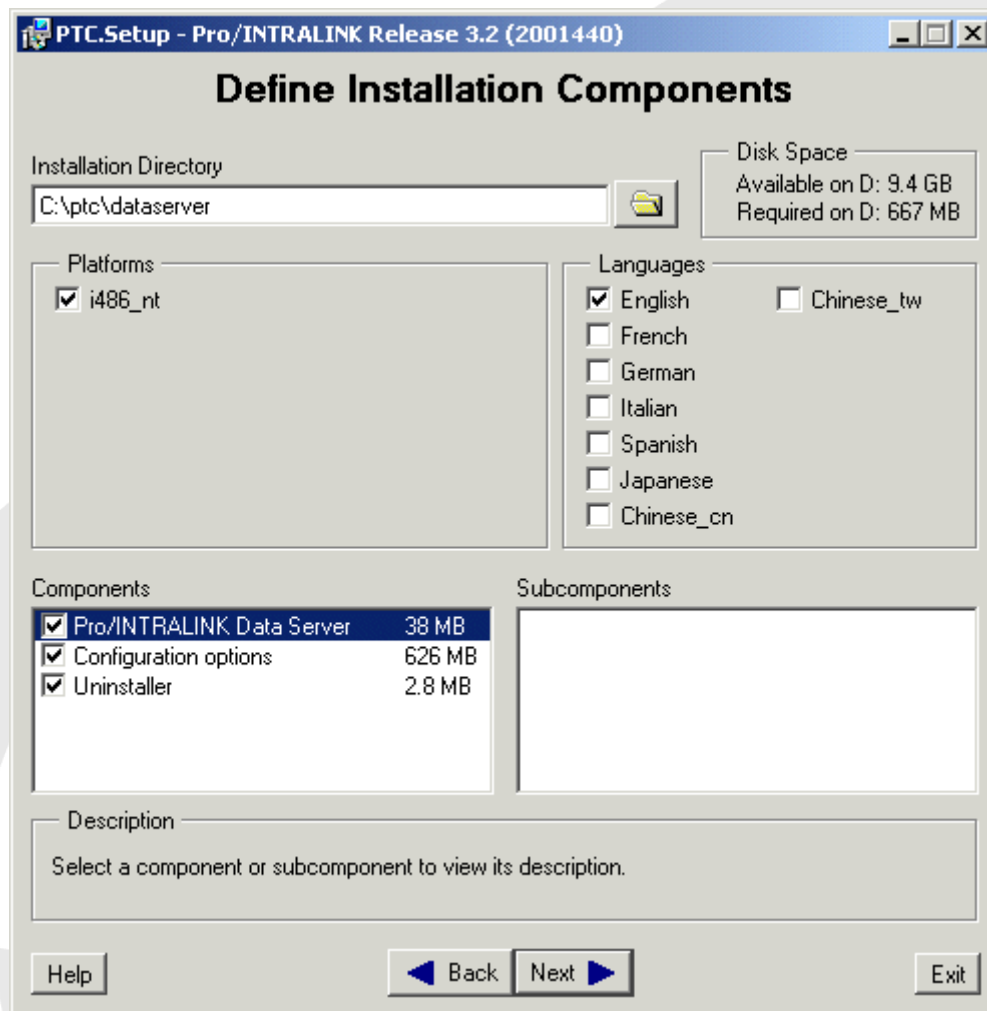
Once the installation has completed, the progress bar is replaced with the phrase **Installation complete**. Select the **#Next** button to continue with the installation of the next component or to exit out of Setup.



## II. Dataserver Installation

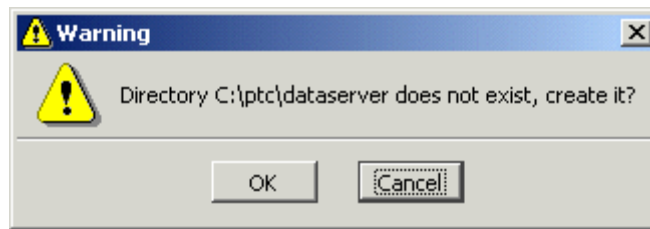
**\*\* This lesson will take you through the installation of the Pro/INTRALINK Dataserver. The Dataserver, or Commonsense is the central data library where users can display and access assemblies, parts, drawings, ... etc. \*\***

From PTC Setup check the Pro/INTRALINK Data Server option and select #Next. Enter in the installation location for the Intralink Dataserver. Use the folder button to browse to the desired location. The correct platform should be checked automatically by Setup. Make sure that the desired language is checked on the right side. Also select the components to install from the Components field by checking or un-checking the boxes next to the appropriate components.



*\*\* Notice the space available at the selected location and the space needed to install the selected components is displayed in the upper right section of this window. If there is not enough space for the selected components at the selected location, the space available will appear in red. \*\**

Select the **#Next** button. If you have entered in a directory path that does not yet exist, a warning message will appear. The warning states that the selected directory does not exist and asks if you want to create it.



Select **#Ok** to move on. If you select **#Cancel** you must change the specified location directory in order to continue with the installation.

In the Define database size and location window, enter in the directory where you want the Intralink database files to be stored. These files contain all the information about your objects. Not the physical objects themselves, but information about them. The default directory is the `<dataserver_loadpoint>\intralink\db\` directory. Use the folder button to browse to another location.

In the bottom half of the window, determine the default size of your Dataserver by selecting the radio button next to the desired size. Each size has an approximation of the free space needed for that particular installation size.