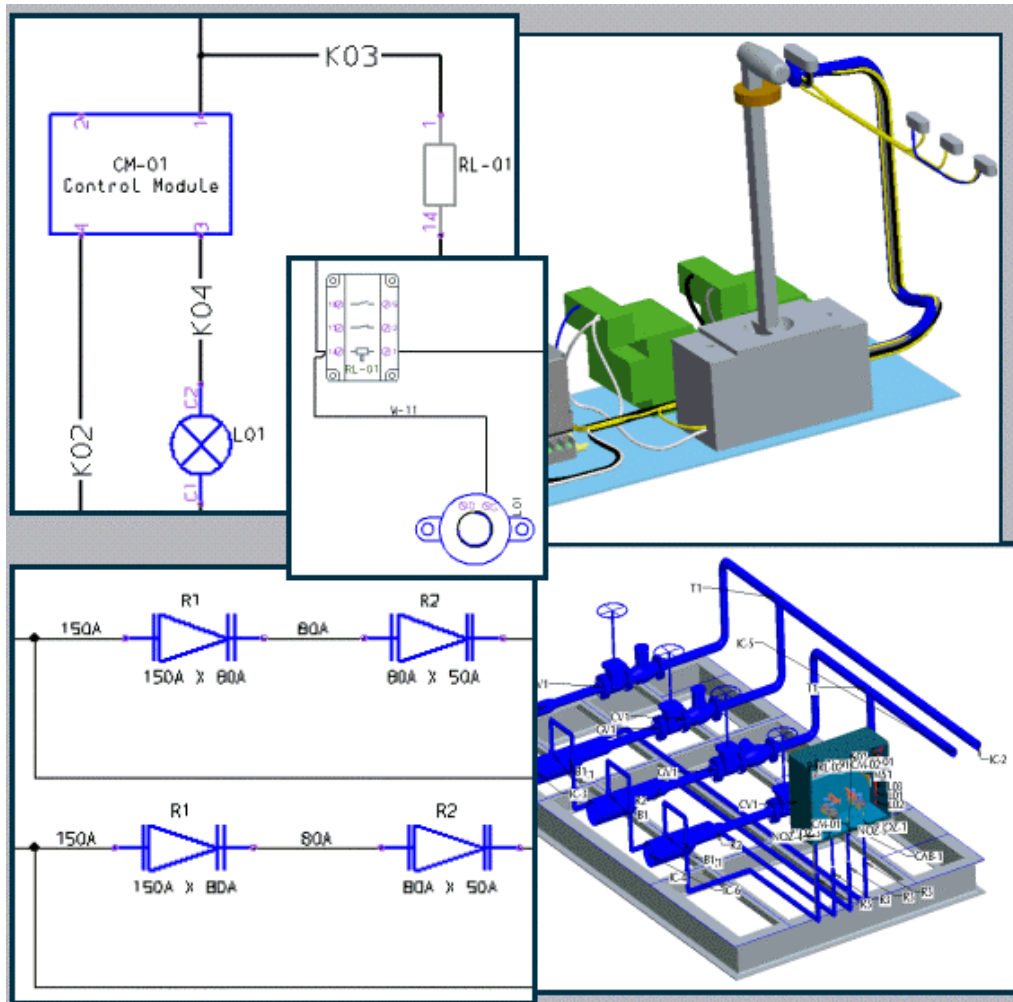


# PTC Global Services



## Creating 2-D Schematics with Routed Systems Designer

T982-330-02



# Training Agenda

## Creating 2-D Schematics with Routed Systems Designer

### Day 1

Introduction

Creating and Manipulating Designs

Configuring Catalog Properties and Templates

Creating and Using Artifacts in the Catalog Explorer

### Day 2

Creating Block Diagrams

Creating Electrical and Fluid Diagrams - I

Creating Electrical and Fluid Diagrams - II

Communicating Information with Pro/ENGINEER Wildfire

# Table of Contents

## Creating 2-D Schematics with Routed Systems Designer

THE PRECISION LEARNING METHODOLOGY.....	i
CONTINUOUS IMPROVEMENT .....	ii
PRECISION LEARNING IN THE CLASSROOM .....	iii
EDUCATION CIRCUIT EXAMPLE .....	iv
<b>INTRODUCTION</b>	<b>1-1</b>
Module 1 Lab Exercises.....	1-8
Exercise 1: Reviewing Electrical and Piping Diagrams .....	1-8
Exercise 2: Reviewing 3-D Piping and Harness Designs.....	1-27
Summary .....	1-35
<b>CREATING AND MANIPULATING DESIGNS</b>	<b>2-1</b>
Module 2 Lab Exercises.....	2-7
Exercise 1: Configuring Designs and Folder Structures.....	2-7
Exercise 2: Viewing and Manipulating Designs Sheets .....	2-9
Summary .....	2-25
<b>CONFIGURING CATALOG PROPERTIES AND TEMPLATES</b>	<b>3-1</b>
Module 3 Lab Exercises.....	3-4
Exercise 1: Configure Global Properties and Object Types .....	3-4
Summary .....	3-14
<b>CREATING AND USING ARTIFACTS IN THE CATALOG EXPLORER</b>	<b>4-1</b>
Module 4 Lab Exercises.....	4-8
Exercise 1: Configuring Ports, Blocks and Fibers. ....	4-8
Exercise 2: Configuring Variable Groups and Cables (Electrical) .....	4-26
Exercise 3: Configuring Fixed Groups and Pipelines (Piping).....	4-41
Summary .....	4-47
<b>CREATING BLOCK DIAGRAMS</b>	<b>5-1</b>
Module 5 Lab Exercises.....	5-3
Exercise 1: Creating Block Diagrams.....	5-3
Summary .....	5-11



<b>CREATING ELECTRICAL AND FLUID DIAGRAMS - I</b>	<b>6-1</b>
Module 6 Lab Exercises .....	6-4
Exercise 1: Creating Circuit Diagrams.....	6-4
Exercise 2: Creating P & ID – Stage 1.....	6-29
Summary .....	6-50
<b>CREATING ELECTRICAL AND FLUID DIAGRAMS - II</b>	<b>7-1</b>
Module 7 Lab Exercises .....	7-4
Exercise 1: Creating Wiring Diagrams.....	7-4
Exercise 2: Creating P & ID – Stage 2.....	7-27
Summary .....	7-49
<b>COMMUNICATING INFORMATION WITH PRO/ENGINEER WILDFIRE</b>	<b>8-1</b>
Module 8 Lab Exercises .....	8-5
Exercise 1: Using Wiring Diagram Information in Harness Designs (Electrical) .....	8-5
Exercise 2: Using P & ID Information in a Piping Specification Database (Piping).....	8-24
Summary .....	8-53
<b>USING PTC HELP</b>	<b>A-1</b>
Overview of Pro/ENGINEER Wildfire Help.....	A-2
Using Pro/ENGINEER Wildfire Help .....	A-2
Accessing Pro/ENGINEER Help from the Main Menu.....	A-2
Accessing Context-Sensitive Pro/ENGINEER Wildfire Help.....	A-3
Using the Pro/ENGINEER Menu Manager .....	A-5
<b>TECHNICAL SUPPORT</b>	<b>B-1</b>
Locating the Technical Support Web Page .....	B-2
Opening Technical Support Calls via E-Mail .....	B-2
Opening Technical Support Calls via Telephone.....	B-2
Opening Technical Support Calls via the Web .....	B-3
Sending Data Files to PTC Technical Support .....	B-3
Routing Your Technical Support Calls.....	B-3
Technical Support Call Priorities.....	B-4
Software Performance Report Priorities .....	B-4
Registering for On-Line Support.....	B-5
Using the Online Services .....	B-6
Finding Answers in the Knowledge Base .....	B-6
Contact Information .....	B-9
Technical Support Worldwide Electronic Services.....	B-9



Technical Support Customer Feedback Line .....	B-9
Telephone and Fax Information .....	B-10
North America Telephone Information .....	B-10
Europe Telephone Information.....	B-10
Asia and Pacific Rim Telephone Information .....	B-12
Electronic Services .....	B-13