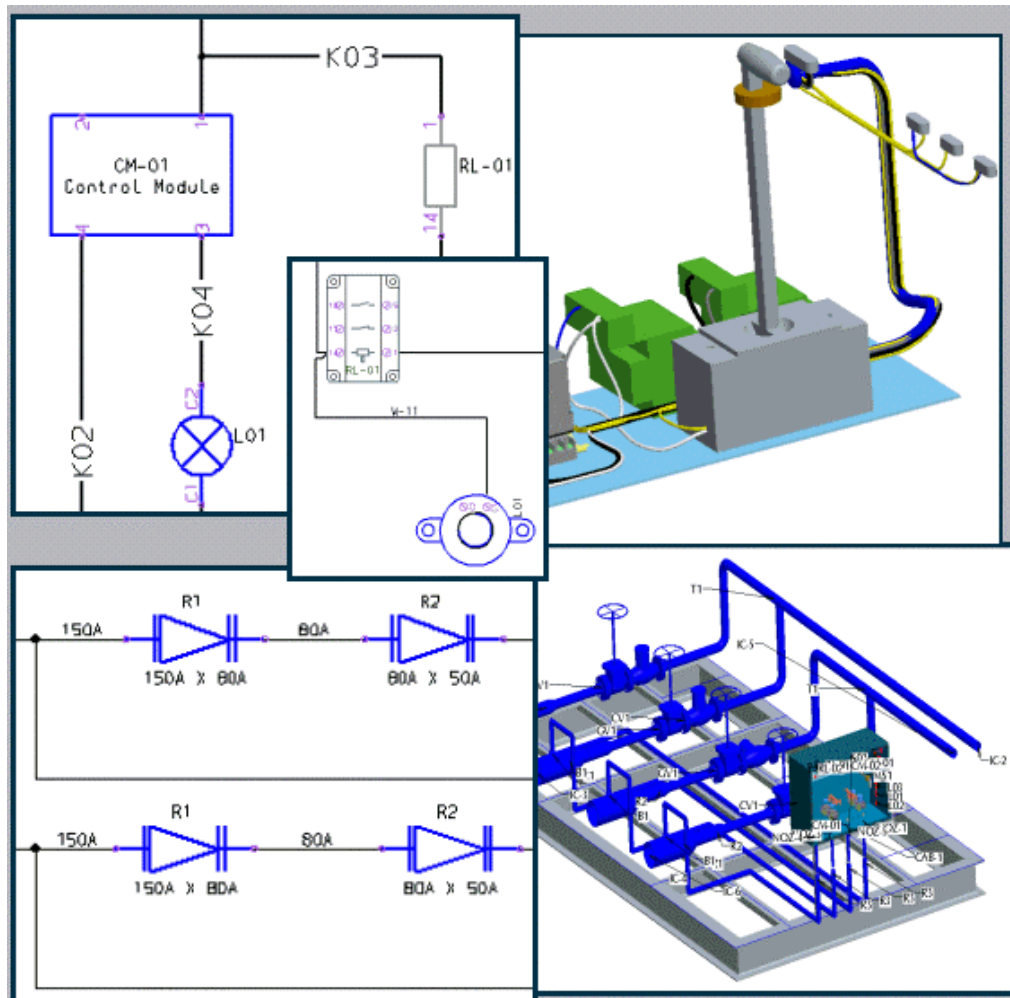


# PTC Global Services



**Creating 2-D Schematics with RSD  
5.0 and Pro/ENGINEER Wildfire 2.0**

T1723-340-01



# Training Agenda

## Creating 2-D Schematics with RSD 5.0 and Pro/ENGINEER Wildfire 2.0

### Day 1

Introduction

Creating and Manipulating Designs

Configuring Catalog Properties and Templates

Creating and Using Artifacts in the Catalog Explorer

### Day 2

Creating Block Diagrams

Creating Electrical and Fluid Diagrams - I

Creating Electrical and Fluid Diagrams – II

Communicating Information with Pro/ENGINEER Wildfire

# Table of Contents

## Creating 2-D Schematics with RSD 5.0 and Pro/ENGINEER Wildfire 2.0

<b>INTRODUCTION</b>	<b>1-1</b>
Introduction .....	1-1
Objectives .....	1-1
Module 1 Lecture Notes .....	1-2
Diagram and Harness Development Process Overview .....	1-3
Piping Development Process Overview .....	1-5
RSD Diagrams .....	1-7
RSD Concepts and Terminology .....	1-11
Pro/ENGINEER Cabling Terminology .....	1-14
Pro/ENGINEER Piping Terminology .....	1-15
RSD Lite Comparison .....	1-16
Module 1 Lab Exercises .....	1-17
Exercise 1: Reviewing Electrical and Piping Diagrams .....	1-17
Exercise 2: Reviewing 3-D Piping and Harness Designs .....	1-36
Summary .....	1-44
<b>CREATING AND MANIPULATING DESIGNS</b>	<b>2-1</b>
Introduction .....	2-1
Objectives .....	2-1
Module 2 Lecture Notes .....	2-2
RSD Interface Overview .....	2-3
Designs and Folder Structures .....	2-5
Navigating Design Sheets .....	2-8
Selecting and Manipulating Objects .....	2-9
Layers .....	2-12
Module 2 Lab Exercises .....	2-13
Exercise 1: Configuring Designs and Folder Structures .....	2-13
Exercise 2: Viewing and Manipulating Designs Sheets .....	2-15
Summary .....	2-31



<b>CONFIGURING CATALOG PROPERTIES AND TEMPLATES</b>	<b>3-1</b>
Introduction .....	3-1
Objectives .....	3-1
Module 3 Lecture Notes.....	3-2
Design Catalogs.....	3-3
Design Catalog Properties .....	3-4
Design Catalog Object Types and Global Properties .....	3-5
Module 3 Lab Exercises .....	3-7
Exercise 1: Configure Global Properties and Object Types .....	3-7
Summary .....	3-16
<b>CREATING AND USING ARTIFACTS IN THE CATALOG EXPLORER</b>	<b>4-1</b>
Introduction .....	4-1
Objectives .....	4-1
Module 4 Lecture Notes.....	4-2
Catalog Artifacts.....	4-3
Ports.....	4-4
Blocks.....	4-5
Fibers .....	4-6
Groups .....	4-7
Variable Groups .....	4-8
Configuring Shapes .....	4-10
Cables .....	4-11
Exporting and Importing Packages.....	4-12
Datatables and Datasets.....	4-14
Module 4 Lab Exercises .....	4-15
Exercise 1: Configuring Ports, Blocks and Fibers.....	4-15
Exercise 2: Configuring Variable Groups and Cables (Electrical) .....	4-31
Exercise 3: Configuring Fixed Groups and Pipelines (Piping).....	4-46
Summary .....	4-52
<b>CREATING BLOCK DIAGRAMS</b>	<b>5-1</b>
Introduction .....	5-1
Objectives .....	5-1
Module 5 Lecture Notes.....	5-2
Block Diagrams Overview.....	5-3
Creating Block Diagrams .....	5-4
Module 5 Lab Exercises .....	5-5
Exercise 1: Creating Block Diagrams .....	5-5
Summary .....	5-13



<b>CREATING ELECTRICAL AND FLUID DIAGRAMS - I</b>	<b>6-1</b>
Introduction.....	6-1
Objectives.....	6-1
Module 6 Lecture Notes.....	6-2
Circuit Diagrams Overview.....	6-3
Creating Circuit Diagrams.....	6-4
P & ID Overview.....	6-5
Creating P & ID - Stage 1.....	6-6
Module 6 Lab Exercises.....	6-7
Exercise 1: Creating Circuit Diagrams.....	6-7
Exercise 2: Creating P & ID – Stage 1.....	6-31
Summary.....	6-50
<b>CREATING ELECTRICAL AND FLUID DIAGRAMS - II</b>	<b>7-1</b>
Introduction.....	7-1
Objectives.....	7-1
Module 7 Lecture Notes.....	7-2
Wiring Diagrams Overview.....	7-3
Creating Wiring Diagrams.....	7-4
Creating P & ID Sheets - Stage 2.....	7-6
Module 7 Lab Exercises.....	7-7
Exercise 1: Creating Wiring Diagrams.....	7-7
Exercise 2: Creating P & ID – Stage 2.....	7-30
Summary.....	7-50
<b>COMMUNICATING INFORMATION WITH PRO/ENGINEER WILDFIRE</b>	<b>8-1</b>
Introduction.....	8-1
Objectives.....	8-1
Module 8 Lecture Notes.....	8-2
Electrical Process Overview.....	8-3
Configuring wiring diagrams and exporting XML files.....	8-4
Importing and using XML data in harness designs.....	8-5
Piping Design Approaches.....	8-6
Specification Driven Piping Process Overview.....	8-7
Exporting Design Information and Key Properties.....	8-9
Module 8 Lab Exercises.....	8-11
Exercise 1: Using Wiring Diagram Information in Harness Designs (Electrical).	8-11
Exercise 2: Using P & ID Information in a Piping Specification Database (Piping).....	8-28
Summary.....	8-56



**USING PTC HELP**

**A-1**

Overview of Pro/ENGINEER Wildfire 2.0 Help..... A-2

Using Pro/ENGINEER Wildfire 2.0 Help ..... A-2

    Accessing Pro/ENGINEER Wildfire 2.0 Help from the Main Menu ..... A-2

    Accessing Context-Sensitive Pro/ENGINEER Wildfire 2.0 Help ..... A-3

    Using the Pro/ENGINEER Wildfire 2.0 Menu Manager ..... A-5