

## Technical Datasheet

### ➔ Technical Requirements

Legend is a modular suite of solutions for bulk loading data into a PLM system. A functioning set of modules consists of a Base Module, Source Modules to read your files and a Destination Module that targets the PLM system. Below are specifications for each of the modules that compose the suite.

#### Legend Base Module

The core of Legend's data migration technology. Runs on Windows 2000. Requires 1 GB of RAM, an 800 mHz processor, and 500 MB of disk space. Guides the user through the migration process with an easy-to-use Setup Wizard. Reads file data and file names from the file system. Maps captured CAD attributes and parameters to target system attributes automatically. Outputs an XML file that is compatible with the Legend Loading Destination Modules. Provides data cleanliness analysis with a Details page in HTML, status checkpoints and extensive logging at various stages along the way.

### ➔ Source Modules

#### Pro/ENGINEER Module

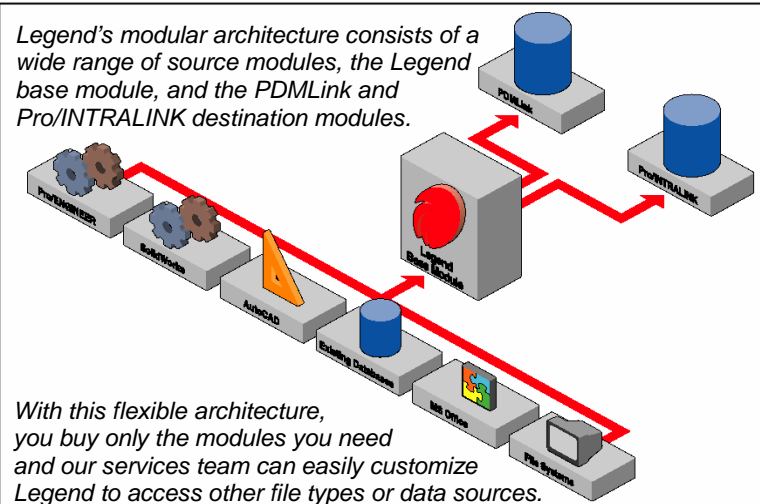
Compatible with Pro/E 2001 and WildFire 1 and 2. Reads Parameters from each model. Reads the assembly structure from the Pro/E model. Read dependency structure from the Pro/E model. Reads the Family Table generic and instance data from the Pro/E model.

#### SolidWorks Module

Compatible with SolidWorks 2003 and 2004. Reads template files to determine the list of Properties used in the models. Reads Properties that are present in each model. Reads assembly structure from the SolidWorks model. Captures Configuration tables from the model files.

#### AutoCAD Module

Compatible with AutoCAD R2000i, R2002 and 2004. Reads template files to determine the list of AutoCAD attributes used in the drawing files. Reads the AutoCAD attributes from each file. Captures relationships between drawings according to embedded Xref structure within each file.



#### Inventor Module

Compatible with Inventor 7 and 8  
 Reads template files to determine the list of Properties used in the models.  
 Reads Properties that are present in each model.  
 Reads assembly structure from the Inventor model.

#### Microsoft Office Module

Compatible with Office 97, Office 2000, and Office XP versions of Word and Excel.  
 Reads relationships based on hyperlinks and mail merge fields embedded within Office documents.  
 Reads templates to determine the list of Custom Properties that will be used in the document files.  
 Reads Summary and Custom Properties from each file.

#### Miscellaneous Source Module

Retrieves and loads files for which the Legend Reader is not available. This includes, but is not limited to, files such as .TIF, .PCX, .PDF, etc.

### ➔ Database Modules

#### Database CSV Module

Reads databases in CSV format.  
 Reads column headings as attributes and field entries as attribute values.  
 Merges metadata from CSV file with metadata extracted from CAD files.

#### Pro/INTRALINK Exporter Module

Captures Metadata from Pro/INTRALINK into a CSV file and exports content from Pro/INTRALINK to the file system.  
 Allows for export to PDMLink in a project by project scenario.

 **Destination Modules****Windchill PDMLink™ 7.0**

- Loads captured metadata from Source modules into PDMLink 7.0
- Creates Part Objects as well as Document Objects for model files.
- Creates product structure in PDMLink based on the captured assembly structures.
- Populates the soft Attributes in PDMLink based on Legend Mapping from attributes and parameters in source modules.
- Creates part instances and generics based on Family Table and Configurations captured from CAD applications.
- Creates associations between Document Objects and Part Objects from relationship data captured by the Base Module.

**Windchill PDMLink™ 8.0 (\*August 2005\*)**

- Loads captured metadata from Source modules into Windchill 8.0
- Creates Part Objects as well as Document Objects for model files.
- Creates product structure in Windchill based on the captured assembly structures.
- Populates the soft Attributes in Windchill based on Legend Mapping from attributes and parameters in source modules.
- Creates part instances and generics based on Family Table and Configurations captured from CAD applications.
- Creates associations between Document Objects and Part Objects from relationship data captured by the Base Module.

**Windchill Pro/INTRALINK 3.3 or 3.4**

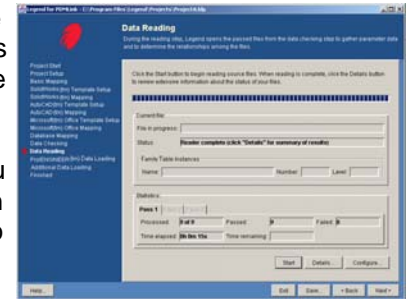
- Loads AutoCAD drawing files
- Sets document attributes.
- Loads miscellaneous files including, but not limited to, files such as .TIF, .PCX, .PDF, etc.

 **Supplemental Tools****VerDes Module**

- Supplemental program that verifies family tables and designates parameters prior to data migration.
- For Pro/ENGINEER 2001, Wildfire 1 and 2.
- Requires an installation of Legend for PDMLink.

 **The Legend for PDMLink Wizard**

Legend's easy-to-use wizard interface walks you through the entire process of loading your information into PDMLink. It helps you define the information sources, map them to their respective targets, and capture the metadata and structure. Then Legend loads the files and places the metadata into your PDM system. Before you begin the loading process, you can preview the information to ensure accuracy. Throughout the session, Legend provides the status of your progress.

 **Prerequisites****Legend Client Requirements**

- Windows 2000 or XP.
- At least 300 MB free disk space.
- WM/Pro for Pro/ENGINEER for Pro/ENGINEER
- WM/SolidWorks for SolidWorks
- WM/AutoCAD for AutoCAD files
- Internet Explorer 6

**Contact I3 for more information:**

info@i-cubed.com  
Tel: 919-755-5300 ext. 451  
Fax: 919-755-5301  
Integrated Industrial Information, Inc.  
900 Main Campus Drive, Suite 317  
Raleigh, NC 27606

