



# **Windchill® Installation Overview**

**Windchill 8.0  
April 2007**

**Copyright © 2007 Parametric Technology Corporation. All Rights Reserved.**

User and training documentation from Parametric Technology Corporation and its subsidiary companies (collectively “PTC”) are subject to the copyright laws of the United States and other countries and is provided under a license agreement that restricts copying, disclosure, and use of such documentation. PTC hereby grants to the licensed user the right to make copies in printed form of this documentation if provided on software media, but only for internal/personal use and in accordance with the license agreement under which the applicable software is licensed. Any copy made shall include the PTC copyright notice and any other proprietary notice provided by PTC. This documentation may not be disclosed, transferred, modified, or reduced to any form, including electronic media, or transmitted or made publicly available by any means without the prior written consent of PTC and no authorization is granted to make copies for such purposes.

Information described herein is furnished for general information only, is subject to change without notice, and should not be construed as a warranty or commitment by PTC. PTC assumes no responsibility or liability for any errors or inaccuracies that may appear in this document.

The software described in this document is provided under written license agreement, contains valuable trade secrets and proprietary information, and is protected by the copyright laws of the United States and other countries. It may not be copied or distributed in any form or medium, disclosed to third parties, or used in any manner not provided for in the software licenses agreement except with written prior approval from PTC. UNAUTHORIZED USE OF SOFTWARE OR ITS DOCUMENTATION CAN RESULT IN CIVIL DAMAGES AND CRIMINAL PROSECUTION.

**Registered Trademarks of PTC**

Advanced Surface Design, Advent, Arbortext, Behavioral Modeling, CADDs, Calculation Management Suite, Computervision, CounterPart, Create · Collaborate · Control, Designate, EPD, EPD.Connect, Epic Editor, Expert Machinist, Flexible Engineering, GRANITE, HARNESSDESIGN, Info\*Engine, InPart, Mathcad, Mathsoft, MECHANICA, Optegra, Parametric Technology, Parametric Technology Corporation, PartSpeak, PHOTORENDER, Pro/DESKTOP, Pro/E, Pro/ENGINEER, Pro/HELP, Pro/INTRALINK, Pro/MECHANICA, Pro/TOOLKIT, Product First, Product Development Means Business, Product Makes the Company, PTC, the PTC logo, PT/Products, Shaping Innovation, Simple · Powerful · Connected, StudyWorks, The Way to Product First, Wildfire, Windchill, Windchill DynamicDesignLink, and Windchill PDMLink.

**Trademarks of PTC**

3B2, 3DPAINT, Arbortext Editor, Arbortext Content Manager, Arbortext Contributor, Arbortext Companion for Word®, Arbortext Advanced Print Publisher - Desktop, Arbortext Advanced Print Publisher - Enterprise, Arbortext Publishing Engine, Arbortext Dynamic Link Manager, Arbortext Styler, Arbortext Architect, Arbortext Digital Media Publisher, Associative Topology Bus, AutobuildZ, CDRS, CV, CVact, CVAec, CVdesign, CV DORS, CVMAC, CVNC, CVToolmaker, Create · Collaborate · Control · Communicate, EDAcompare, EDAconduit, DataDoctor, DesignSuite, DIMENSION III, Distributed Services Manager, DIVISION, e/ENGINEER, eNC Explorer, Expert Framework, Expert MoldBase, Expert Toolmaker, FlexPDM, FlexPLM, Harmony, InterComm, InterComm Expert, InterComm EDAcompare, InterComm EDAconduit, ISSM, KDiP, Knowledge Discipline in Practice, Knowledge System Driver, ModelCHECK, MoldShop, NC Builder,

PDS Workbench, POLYCAPP, Pro/ANIMATE, Pro/ASSEMBLY, Pro/CABLING, Pro/CASTING, Pro/CDT, Pro/CMM, Pro/COLLABORATE, Pro/COMPOSITE, Pro/CONCEPT, Pro/CONVERT, Pro/DATA for PDGS, Pro/DESIGNER, Pro/DETAIL, Pro/DIAGRAM, Pro/DIEFACE, Pro/DRAW, Pro/ECAD, Pro/ENGINE, Pro/FEATURE, Pro/FEM POST, Pro/FICIENCY, Pro/FLY THROUGH, Pro/HARNESS, Pro/INTERFACE, Pro/LANGUAGE, Pro/LEGACY, Pro/LIBRARYACCESS, Pro/MESH, Pro/Model.View, Pro/MOLDESIGN, Pro/NC ADVANCED, Pro/NC CHECK, Pro/NC MILL, Pro/NC POST, Pro/NC SHEETMETAL, Pro/NC TURN, Pro/NC WEDM, Pro/NC Wire EDM, Pro/NETWORK ANIMATOR, Pro/NOTEBOOK, Pro/PDM, Pro/PHOTORENDER, Pro/PIPING, Pro/PLASTIC ADVISOR, Pro/PLOT, Pro/POWER DESIGN, Pro/PROCESS, Pro/REPORT, Pro/REVIEW, Pro/SCAN TOOLS, Pro/SHEETMETAL, Pro/SURFACE, Pro/VERIFY, Pro/Web.Link, Pro/Web.Publish, Pro/WELDING, ProductView, PTC Precision, Routed Systems Designer, Shrinkwrap, The Product Development Company, Validation Manager, Warp, Windchill MPMLink, Windchill PartsLink, Windchill ProjectLink, and Windchill SupplyLink.

#### **Patents of Parametric Technology Corporation or a Subsidiary**

Registration numbers and issue dates follow. Additionally, equivalent patents may be issued or pending outside of the United States. Contact PTC for further information.  
 GB2366639B 13-October-2004. GB2363208 25-August-2004. (EP/DE/GB)0812447 26-May-2004. GB2365567 10-March-2004. (GB)2388003B 21-January-2004. 6,665,569 B1 16-December-2003. GB2353115 10-December-2003. 6,625,607 B1 23-September-2003. 6,580,428 B1 17-June-2003. GB2354684B 02-July-2003. GB2384125 15-October-2003. GB2354096 12-November-2003. GB2354924 24-September-2003. 6,608,623 B1 19-August-2003. GB2353376 05-November-2003. GB2354686 15-October-2003. 6,545,671 B1 08-April-2003. GB2354685B 18-June-2003. GB2354683B 04-June-2003. 6,608,623 B1 19-August-2003. 6,473,673 B1 29-October-2002. GB2354683B 04-June-2003. 6,447,223 B1 10-Sept-2002. 6,308,144 23-October-2001. 5,680,523 21-October-1997. 5,838,331 17-November-1998. 4,956,771 11-September-1990. 5,058,000 15-October-1991. 5,140,321 18-August-1992. 5,423,023 05-June-1990. 4,310,615 21-December-1998. 4,310,614 30-April-1996. 4,310,614 22-April-1999. 5,297,053 22-March-1994. 5,513,316 30-April-1996. 5,689,711 18-November-1997. 5,506,950 09-April-1996. 5,428,772 27-June-1995. 5,850,535 15-December-1998. 5,557,176 09-November-1996. 5,561,747 01-October-1996. (EP)0240557 02-October-1986. 6,275,866 14-Aug-2001. 5,469,538 21-Nov-1995. 5,526,475 11-June-1996. 5,771,392 23-June-1998. 5,844,555 01-Dec-1998. PCT 03/05061 13-Feb-2003.

#### **Third-Party Trademarks**

Adobe, Acrobat, Distiller, FrameMaker and the Acrobat logo are trademarks of Adobe Systems Incorporated. Cognos is a registered trademark of Cognos Corporation. IBM, AIX, and WebSphere are registered trademarks of IBM Corporation. Allegro, Cadence, and Concept are registered trademarks of Cadence Design Systems, Inc. Apple, Mac, Mac OS, Panther, and Tiger are trademarks or registered trademarks of Apple Computer, Inc. AutoCAD and Autodesk Inventor are registered trademarks of Autodesk, Inc. Baan is a registered trademark of Baan Company. CADAM and CATIA are registered trademarks of Dassault Systemes. DataDirect Connect is a registered trademark of DataDirect Technologies. CYA, iArchive, HOTbackup, and Virtual StandBy are trademarks or registered trademarks of CYA Technologies, Inc. DOORS is a registered trademark of Telelogic AB. Feature-Following Anti-Aliasing is a trademark of LightWorks Design. FLEXnet, InstallShield, and InstallAnywhere are trademarks or registered trademarks of Macrovision Corporation. Geomagic is a registered trademark of Raindrop Geomagic, Inc.

EVERSYNC, GROOVE, GROOVEFEST, GROOVE.NET, GROOVE NETWORKS, iGROOVE, PEERWARE, and the interlocking circles logo are trademarks of Groove Networks, Inc. Helix is a trademark of Microcadam, Inc. HOOPS is a trademark of Tech Soft America, Inc. HP, Hewlett-Packard, and HP-UX are registered trademarks of Hewlett-Packard Company. Advanced ClusterProven, ClusterProven, the ClusterProven design, Rational Rose, and Rational ClearCase are trademarks or registered trademarks of International Business Machines in the United States and other countries and are used under license. IBM Corporation does not warrant and is not responsible for the operation of this software product. I-DEAS, Metaphase, Parasolid, SHERPA, Solid Edge, TeamCenter, UG NX, and Unigraphics are trademarks or registered trademarks of UGS Corp. Intel is a registered trademark of Intel Corporation. IRIX is a registered trademark of Silicon Graphics, Inc. I Run and ISOGEN are registered trademarks of Alias Ltd. Linux is a registered trademark of Linus Torvalds. MainWin and Mainsoft are trademarks of Mainsoft Corporation. MatrixOne is a trademark of MatrixOne, Inc. Mentor Graphics and Board Station are registered trademarks and 3D Design, AMPLE, and Design Manager are trademarks of Mentor Graphics Corporation. MEDUSA and STHENO are trademarks of CAD Schroer GmbH. Microsoft, ActiveX, Excel, JScript, Windows, Windows NT, Windows 2000, Windows 2000 Server, Windows XP, Windows Server 2003, the Windows logo, Visual Basic, the Visual Basic logo, and Active Accessibility are trademarks or registered trademarks of Microsoft Corporation in the United States and/or other countries. Moldflow is a registered trademark of Moldflow Corporation. Mozilla and Firefox are registered trademarks of the Mozilla Foundation. Netscape, Netscape Navigator, Netscape Communicator, and the Netscape N and Ship's Wheel logos are registered trademarks or service marks of Netscape Communications Corporation in the U.S. and other countries. Oracle and interMedia are registered trademarks of Oracle Corporation. OrbixWeb is a registered trademark of IONA Technologies PLC. PANTONE is a registered trademark and PANTONE CALIBRATED is a trademark of Pantone, Inc. PDGS is a registered trademark of Ford Motor Company. RAND is a trademark of RAND Worldwide. RetrievalWare is a registered trademark of Convera Corporation. RosettaNet is a trademark and Partner Interface Process and PIP are registered trademarks of RosettaNet, a nonprofit organization. SAP and R/3 are registered trademarks of SAP AG Germany. SolidWorks is a registered trademark of SolidWorks Corporation. SPARC is a registered trademark and SPARCStation is a trademark of SPARC International, Inc. (Products bearing the SPARC trademarks are based on an architecture developed by Sun Microsystems, Inc.) All SPARC trademarks are used under license and are trademarks or registered trademarks of SPARC International, Inc. in the United States and in other countries. Sun, Sun Microsystems, the Sun logo, Solaris, UltraSPARC, Java and all Java based marks, and "The Network is the Computer" are trademarks or registered trademarks of Sun Microsystems, Inc. in the United States and in other countries. 3Dconnexion is a registered trademark of Logitech International S.A. TIBCO is a registered trademark and TIBCO ActiveEnterprise, TIBCO Designer, TIBCO Enterprise Message Service, TIBCO Rendezvous, TIBCO TurboXML, and TIBCO BusinessWorks are trademarks or registered trademarks of TIBCO Software Inc. in the United States and other countries. WebEx is a trademark of WebEx Communications, Inc. API Toolkit is a trademark of InterCAP Graphics Systems, Inc. BEA and WebLogic are registered trademarks of BEA Systems, Inc. BEA WebLogic Server and BEA WebLogic Platform are trademarks of BEA Systems, Inc. Documentum is a registered trademark of EMC Corporation. Elan License Manager and Softlock are trademarks of Rainbow Technologies, Inc. JAWS is a registered trademark of Freedom Scientific BLV Group, LLC in the United

States and other countries. FileNET is a registered trademark of FileNET Corporation. Panagon is a trademark of FileNET Corporation. Galaxy Application Environment is a licensed trademark of Visix Software, Inc. Interleaf is a trademark of Interleaf, Inc. IslandDraw and IslandPaint are trademarks of Island Graphics Corporation. OSF/Motif and Motif are trademarks of the Open Software Foundation, Inc. Palm Computing, Palm OS, Graffiti, HotSync, and Palm Modem are registered trademarks, and Palm III, Palm IIIe, Palm IIIx, Palm V, Palm Vx, Palm VII, Palm, More connected, Simply Palm, the Palm Computing platform logo, all Palm logos, and HotSync logo are trademarks of Palm, Inc. or its subsidiaries. Proximity and Linguibase are registered trademarks of Proximity Technology, Inc. TeX is a trademark of the American Mathematical Society. UNIX is a registered trademark of The Open Group. X Window System is a trademark of X Consortium, Inc.

### **Third-Party Technology Information**

Certain PTC software products contain licensed third-party technology:

Rational Rose and Rational ClearCase are copyrighted software of IBM Corp.

RetrievalWare is copyrighted software of Convera Corporation.

VisTools library is copyrighted software of Visual Kinematics, Inc. (VKI) containing confidential trade secret information belonging to VKI.

HOOPS graphics system is a proprietary software product of, and is copyrighted by, Tech Soft America, Inc.

I Run and ISOGEN are copyrighted software of Alias Ltd.

Xdriver is copyrighted software of 3Dconnexion, Inc, a Logitech International S.A. company.

G POST is copyrighted software and a registered trademark of Intercim.

VERICUT is copyrighted software and a registered trademark of CGTech.

FLEXnet Publisher is copyrighted software of Macrovision Corporation.

Pro/PLASTIC ADVISOR is powered by Moldflow technology.

Fatigue Advisor nCode libraries from nCode International.

TetMesh GHS3D provided by Simulog Technologies, a business unit of Simulog S.A.

MainWin Dedicated Libraries are copyrighted software of Mainsoft Corporation.

DFORMD.DLL is copyrighted software from Compaq Computer Corporation and may not be distributed.

LightWork Libraries are copyrighted by LightWork Design 1990-2001.

Visual Basic for Applications and Internet Explorer is copyrighted software of Microsoft Corporation.

Parasolid is © UGS Corp.

TECHNOMATIX is copyrighted software and contains proprietary information of Technomatix Technologies Ltd.

TIBCO ActiveEnterprise, TIBCO Designer, TIBCO Enterprise Message Service, TIBCO Rendezvous, TIBCO TurboXML, and TIBCO BusinessWorks are provided by TIBCO Software Inc.

DataDirect Connect is copyrighted software of DataDirect Technologies.

Technology "Powered by Groove" is provided by Groove Networks, Inc.

Technology "Powered by WebEx" is provided by WebEx Communications, Inc.

Oracle 8i run time, Oracle 9i run time, and Oracle 10g run time are Copyright 2002-2004

Oracle Corporation. Oracle programs provided herein are subject to a restricted use license and can only be used in conjunction with the PTC software they are provided with. Adobe Acrobat Reader and Adobe Distiller are copyrighted software of Adobe Systems Inc. and are subject to the Adobe End User License Agreement as provided by Adobe with those products.

Certain license management is based on Elan License Manager © 1989-1999 Rainbow Technologies, Inc. All rights reserved.

Portions compiled from Microsoft Developer Network Redistributable Sample Code, Copyright © 1998 by Microsoft Corporation.

The CD-ROM Composer and CD-ROM Consumer are based on Vivace CD-Web Composer Integrator © 1996-1997 KnowledgeSet Corporation. All rights reserved.

Larson CGM Engine 9.4, Copyright © 1992-2007 Larson Software Technology, Inc. All rights reserved.

Certain graphics-handling portions are based on the following technologies:

GIF: Copyright 1989, 1990 Kirk L. Johnson. The author disclaims all warranties with regard to this software, including all implied warranties of merchantability and fitness. In no event shall the author be liable for any special, indirect, or consequential damages or any damages whatsoever resulting from loss of use, data or profits, whether in an action of contract, negligence, or other tortious action, arising out of or in connection with the use or performance of this software.

JPEG: This software is based in part on the work of the Independent JPEG Group.

PNG: Copyright 2004-2007 Glenn Randers-Pehrson.

TIFF: Copyright 1988-1997 Sam Leffler, Copyright © 1991-1997 Silicon Graphics, Inc. The software is provided AS IS and without warranty of any kind, express, implied, or otherwise, including without limitation, any warranty of merchantability or fitness for a particular purpose. In no event shall Sam Leffler or Silicon Graphics be liable for any special, incidental, indirect, or consequential damages of any kind, or any damages whatsoever resulting from loss of use, data or profits, whether or not advised of the possibility of damage, or on any theory of liability, arising out of or in connection with the use or performance of this software.

XBM, Sun Raster, and Sun Icon: Copyright, 1987, Massachusetts Institute of Technology.

ZLIB: Copyright 1995-2004 Jean-loup Gailly and Mark Adler.

PDFlib software is copyright © 1997-2005 PDFlib GmbH. All rights reserved.

PStill software is copyright © Dipl.- Ing. Frank Siebert, 1996-2005

Proximity Linguistic Technology provides Spelling Check/Thesaurus portions of certain software products, including: The Proximity/Bertelsmann Lexikon Verlag Database. Copyright © 1997 Bertelsmann Lexikon Verlag. Copyright © 1997, All Rights Reserved, Proximity Technology, Inc.; The Proximity/C.A. Strombertg AB Database. Copyright © 1989 C.A. Strombertg AB. Copyright © 1989, All Rights Reserved, Proximity Technology, Inc.; The Proximity/Editions Fernand Nathan Database. Copyright © 1984 Editions Fernand Nathan. Copyright © 1989, All Rights Reserved, Proximity Technology, Inc.; The Proximity/Espasa-Calpe Database. Copyright © 1990 Espasa-Calpe. Copyright © 1990, All Rights Reserved, Proximity Technology, Inc.; The Proximity/Dr. Lluís de Yzaguirre i Maura Database. Copyright © 1991 Dr. Lluís de Yzaguirre i Maura Copyright © 1991, All Rights Reserved, Proximity Technology, Inc.; The Proximity/Franklin Electronic Publishers, Inc. Database. Copyright © 1994 Franklin Electronic Publishers, Inc.

Copyright © 1994, All Rights Reserved, Proximity Technology, Inc.; The Proximity/Hachette Database. Copyright © 1992 Hachette. Copyright © 1992, All Rights Reserved, Proximity Technology, Inc.; The Proximity/IDE a.s. Database. Copyright © 1989, 1990 IDE a.s. Copyright © 1989, 1990, All Rights Reserved, Proximity Technology, Inc.; The Proximity/Merriam-Webster, Inc. Database. Copyright © 1984, 1990 Merriam-Webster, Inc. Copyright © 1984, 1990, All Rights Reserved, Proximity Technology, Inc.; The Proximity/Merriam-Webster, Inc./Franklin Electronic Publishers, Inc. Database. Copyright © 1990 Merriam-Webster Inc. Copyright © 1994 Franklin Electronic Publishers, Inc. Copyright © 1994, All Rights Reserved, Proximity Technology, Inc.; The Proximity/Munksgaard International Publishers Ltd. Database. Copyright © 1990 Munksgaard International Publishers Ltd. Copyright © 1990, All Rights Reserved, Proximity Technology, Inc.; The Proximity/S. Fischer Verlag Database. Copyright © 1983 S. Fischer Verlag. Copyright © 1997, All Rights Reserved, Proximity Technology, Inc.; The Proximity/Van Dale Lexicografie by Database. Copyright © 1995, 1997 Van Dale Lexicografie by. Copyright © 1996, 1997, All Rights Reserved, Proximity Technology, Inc.; The Proximity/William Collins Sons & Co. Ltd. Database. Copyright © 1984, 1990 William Collins Sons & Co. Ltd. Copyright © 1988, 1990, All Rights Reserved, Proximity Technology, Inc.; The Proximity/Zanichelli Database. Copyright © 1989 Zanichelli. Copyright © 1989, All Rights Reserved, Proximity Technology, Inc.

CimPro, IGES/Pro, and PS/Pro software are provided by CADCAM-E, Inc.

The Arbortext Import/Export feature includes components that are licensed and copyrighted by CambridgeDocs LLC (© 2002-2005 CambridgeDocs LLC). This functionality:

Includes software developed by the Apache Software Foundation (<http://www.apache.org>).

Redistributes JRE from Sun Microsystems. The Redistributable is complete and unmodified, and only bundled as part of the product. CambridgeDocs is not distributing additional software intended to supersede any component(s) of the Redistributable, nor has CambridgeDocs removed or altered any proprietary legends or notices contained in or on the Redistributable.

CambridgeDocs is only distributing the Redistributable pursuant to a license agreement that protects Sun's interests consistent with the terms contained in the Agreement. CambridgeDocs agrees to defend and indemnify Sun and its licensors from and against any damages, costs, liabilities, settlement amounts and/or expenses (including attorney's fees) incurred in connection with any claim, lawsuit, or action by any third party that arises or results from the use or distribution of any and all Programs and/or Software. This product includes code licensed from RSA Security, Inc. ICU4J portions licensed from IBM (see terms at <http://www-128.ibm.com/developerworks/opensource/>).

Redistributes the Saxon XSLT Processor from Michael Kay, more information, including source code is available at <http://saxon.sourceforge.net/>.

Uses cxImage, an open source image conversion library that follows the zlib license. cxImage further uses the following images libraries which also ship (statically linked) with cxLib: zLib, LibTIFF, LibPNG, LibJPEG, JBIG-Kit, JasPer, LibJ2K. See <http://www.xdp.it/cximage.htm>.

Includes software developed by Andy Clark, namely Neko DTD. NekoDTD is © Copyright 2002, 2003, Andy Clark. All rights reserved. For more information, visit <http://www.apache.org/~andyc/neko/doc/index.html>.

Includes code which was developed and copyright by Steven John Metsker, and shipped with Building Parsers with Java, from Addison Wesley.

Uses controls from Infragistics NetAdvantage 2004, Volume 3, © Copyright 2004 Infragistics.

Word, FrameMaker, and Interleaf filters. Copyright © 2000 Blueberry Software. All rights reserved.

Portions of software documentation are used with the permission of the World Wide Web Consortium. Copyright © 1994-2007 World Wide Web Consortium, (Massachusetts Institute of Technology, European Research Consortium for Informatics and Mathematics, Keio University). All Rights Reserved. <http://www.w3.org/Consortium/Legal>. Such portions are indicated at their points of use.

Copyright and ownership of certain software components is with YARD SOFTWARE SYSTEMS LIMITED, unauthorized use and copying of which is hereby prohibited. YARD SOFTWARE SYSTEMS LIMITED 1987. (Lic. #YSS:SC:9107001)

Certain business intelligence reporting functionality is powered by Cognos.

MKM (Mathsoft Kernel Maple) © 1994 Waterloo Maple Software.

Microsoft Internet Explorer © 1995-2005 Microsoft Corporation.

Web Help © 2004 and Macromedia RoboHelp are copyrighted software of Adobe Systems Incorporated.

Portions of the Mathcad Solver © 1990-2002 by Frontline Systems, Inc.

Sentry Spelling-Checker Engine copyright © 1994-2003 Wintertree Software, Inc.

File Filters © 1986-2002 Circle Systems, Inc.

PDEFIT © 1995-2002 Dr. Klaus Schittkowski.

Hyphenation Copyright © 1986-1999, Computer Hyphenation Ltd. All rights reserved.

\*\*\*\*\*

METIS, developed by George Karypis and Vipin Kumar at the University of Minnesota, can be researched at <http://www.cs.umn.edu/~karypis/metis>. METIS is © 1997 Regents of the University of Minnesota.

Certain software components licensed in connection with the Apache Software Foundation, all rights reserved, and use is subject to the terms and limitations (and license agreement) at <http://www.apache.org>. Apache software is provided by its Contributors AS IS, WITHOUT WARRANTIES OR CONDITIONS OF ANY KIND, and any expressed or implied warranties, including, but not limited to, the implied warranties of title non-infringement, merchantability and fitness for a particular purpose are disclaimed. In no event shall the Apache Software Foundation or its Contributors be liable for any direct, indirect, incidental, special, exemplary, or consequential damages (including, but not limited to, procurement of substitute goods or services; loss of use, data, or profits; or business interruption) however caused and on any theory of liability, whether in contract, strict liability, or tort (including negligence or otherwise) arising in any way out of the use of this software, even if advised of the possibility of such damage. Apache software includes:

Apache Server, Tomcat, Xalan, Xerces, and Jakarta, Jakarta POI, Jakarta Regular Expression, Commons-FileUpload, and XML Beans

IBM XML Parser for Java Edition, the IBM SaxParser and the IBM Lotus XSL Edition

DITA-OT - Apache License Version

Jakarta-ORO (as used with Jena Software)

NekoHTML software developed by Andy Clark © Copyright 2002-2005, Andy Clark. All rights reserved.



Lucene (<http://lucene.apache.org>)

IzPack: Java-based Software Installers Generator (<http://www.izforge.com/izpack/start>)

Pop up calendar components Copyright © 1998 Netscape Communications Corporation. All Rights Reserved.

The following software is distributed under GNU Lesser General Public License (LGPL) which is at <http://www.gnu.org/copyleft/lesser.html> and is provided AS IS by authors with no warranty therefrom without even the implied warranty of MERCHANTABILITY or FITNESS FOR A PARTICULAR PURPOSE (see the GNU LGPL for more details). Upon request PTC will provide the source code for such software for a charge no more than the cost of performing this distribution:

GTK+ - The GIMP Toolkit is licensed under the GNU Library General Public License (LGPL). You may obtain a copy of the source code at <http://www.gtk.org/>, which is likewise provided under the GNU LGPL.

OmniORB is distributed under the terms and conditions of the GNU General Public License - The OmniORB Libraries are released under the GNU LGPL.

Java Port copyright 1998 by Aaron M. Renn ([arenn@urbanophile.com](mailto:arenn@urbanophile.com)), is redistributed under the GNU LGPL. You may obtain a copy of the source code at <http://www.urbanophile.com/arenn/hacking/download.html>. The source code is likewise provided under the GNU LGPL.

JFreeChart is licensed under the GNU LGPL and can be found at <http://www.jfree.org>.

eXist, an Open Source Native XML Database, is redistributed under the GNU LGPL. You may obtain a copy of the source code at <http://exist.sourceforge.net/index.html>. The source code is likewise provided under the GNU LGPL.

UnZip (© 1990 2001 Info ZIP, All Rights Reserved) is provided AS IS and WITHOUT WARRANTY OF ANY KIND. For the complete Info ZIP license see <http://www.info-zip.org/doc/LICENSE>. "Info-ZIP" is defined as the following set of individuals: Mark Adler, John Bush, Karl Davis, Harald Denker, Jean-Michel Dubois, Jean-loup Gailly, Hunter Goatley, Ian Gorman, Chris Herborth, Dirk Haase, Greg Hartwig, Robert Heath, Jonathan Hudson, Paul Kienitz, David Kirschbaum, Johnny Lee, Onno van der Linden, Igor Mandrichenko, Steve P. Miller, Sergio Monesi, Keith Owens, George Petrov, Greg Roelofs, Kai Uwe Rommel, Steve Salisbury, Dave Smith, Christian Spieler, Antoine Verheijen, Paul von Behren, Rich Wales, and Mike White.

The Java™ Telnet Applet (StatusPeer.java, TelnetIO.java, TelnetWrapper.java, TimedOutException.java), Copyright © 1996, 97 Mattias L. Jugel, Marcus Meißner, is redistributed under the GNU General Public License. This license is from the original copyright holder and the Applet is provided WITHOUT WARRANTY OF ANY KIND. You may obtain a copy of the source code for the Applet at <http://www.mud.de/se/jta> (for a charge of no more than the cost of physically performing the source distribution), by sending e mail to [leo@mud.de](mailto:leo@mud.de) or [marcus@mud.de](mailto:marcus@mud.de)-you are allowed to choose either distribution method. Said source code is likewise provided under the GNU General Public License.

Eclipse SWT is distributed under the Eclipse Public License (EPL) (<http://www.eclipse.org/org/documents/epl-v10.php>) and is provided AS IS by authors with no warranty therefrom and any provisions which differ from the EPL are offered by PTC. Upon request PTC will provide the source code for such software for a charge no more than the cost of performing this distribution.

PDFBOX - Free software provided pursuant to the BSD license at <http://www.pdfbox.org/index.html> - Features.

zlib software Copyright © 1995-2002 Jean-loup Gailly and Mark Adler.

#ZipLib GNU software is developed for the Free Software Foundation, Inc. 59 Temple Place, Suite 330, Boston, MA 02111-1307 USA, copyright © 1989, 1991. PTC hereby disclaims all copyright interest in the program #ZipLib written by Mike Krueger. #ZipLib licensed free of charge and there is no warranty for the program, to the extent permitted by applicable law. Except when otherwise stated in writing the copyright holders and/or other parties provide the program AS IS without warranty of any kind, either expressed or implied, including, but not limited to, the implied warranties of merchantability and fitness for a particular purpose. The entire risk as to the quality and performance of the program is with you. Should the program prove defective, you assume the cost of all necessary servicing, repair, or correction.

The Java Getopt.jar file, copyright 1987 1997 Free Software Foundation, Inc.

CUP Parser Generator Copyright ©1996-1999 by Scott Hudson, Frank Flannery, C. Scott Ananian-used by permission. The authors and their employers disclaim all warranties with regard to this software, including all implied warranties of merchantability and fitness. In no event shall the authors or their employers be liable for any special, indirect or consequential damages, or any damages whatsoever resulting from loss of use, data or profits, whether in an action of contract, negligence or other tortious action arising out of or in connection with the use or performance of this software.

Software developed by the OpenSSL Project for use in the OpenSSL Toolkit. (<http://www.openssl.org/>): Copyright © 1998 2003 The OpenSSL Project. All rights reserved. This product may include cryptographic software written by Eric Young ([eay@cryptsoft.com](mailto:eay@cryptsoft.com)).

ImageMagick software is Copyright © 1999-2005 ImageMagick Studio LLC, a nonprofit organization dedicated to making software imaging solutions freely available.

ImageMagick is freely available without charge and provided pursuant to the following license agreement: <http://www.imagemagick.org/script/license.php>.

Mozilla Japanese localization components are subject to the Netscape Public License Version 1.1 (at <http://www.mozilla.org/NPL>). Software distributed under the Netscape Public License (NPL) is distributed on an AS IS basis, WITHOUT WARRANTY OF ANY KIND, either expressed or implied (see the NPL for the rights and limitations that are governing different languages). The Original Code is Mozilla Communicator client code, released March 31, 1998 and the Initial Developer of the Original Code is Netscape Communications Corporation. Portions created by Netscape are Copyright © 1998 Netscape Communications Corporation. All Rights Reserved. Contributors: Kazu Yamamoto ([kazu@mozilla.gr.jp](mailto:kazu@mozilla.gr.jp)), Ryoichi Furukawa ([furu@mozilla.gr.jp](mailto:furu@mozilla.gr.jp)), Tsukasa Maruyama ([mal@mozilla.gr.jp](mailto:mal@mozilla.gr.jp)), Teiji Matsuba ([matsuba@dream.com](mailto:matsuba@dream.com)).

The following components are subject to the Mozilla Public License Version 1.0 or 1.1 at <http://www.mozilla.org/MPL> (the MPL): Gecko and Mozilla components and Charset Detector. Software distributed under the MPL is distributed on an AS IS basis, WITHOUT WARRANTY OF ANY KIND, either expressed or implied and all warranty, support, indemnity or liability obligations under PTC's software license agreements are provided by PTC (see the MPL for the specific language governing rights and limitations). Modifications to Mozilla source code are available under the MPL and are available upon request.

iText Library - Copyright © 1999-2007 by Bruno Lowagie and Paulo Soares. All Rights

Reserved - source code and further information available at <http://www.lowagie.com/iText>.

iCal4j is Copyright © 2005, Ben Fortuna, All rights reserved. Redistribution and use of iCal4j in source and binary forms, with or without modification, are permitted provided that the following conditions are met: (i) Redistributions of source code must retain the above copyright notice, this list of conditions, and the following disclaimer; (ii) Redistributions in binary form must reproduce the above copyright notice, this list of conditions, and the following disclaimer in the documentation and/or other materials provided with the distribution; and (iii) Neither the name of Ben Fortuna nor the names of any other contributors may be used to endorse or promote products derived from this software without specific prior written permission. iCal4j SOFTWARE IS PROVIDED BY THE COPYRIGHT HOLDERS AND CONTRIBUTORS AS IS AND ANY EXPRESS OR IMPLIED WARRANTIES, INCLUDING, BUT NOT LIMITED TO, THE IMPLIED WARRANTIES OF MERCHANTABILITY AND FITNESS FOR A PARTICULAR PURPOSE ARE DISCLAIMED. IN NO EVENT SHALL THE COPYRIGHT OWNER OR CONTRIBUTORS BE LIABLE FOR ANY DIRECT, INDIRECT, INCIDENTAL, SPECIAL, EXEMPLARY, OR CONSEQUENTIAL DAMAGES (INCLUDING, BUT NOT LIMITED TO, PROCUREMENT OF SUBSTITUTE GOODS OR SERVICES; LOSS OF USE, DATA, OR PROFITS; OR BUSINESS INTERRUPTION) HOWEVER CAUSED AND ON ANY THEORY OF LIABILITY, WHETHER IN CONTRACT, STRICT LIABILITY, OR TORT (INCLUDING NEGLIGENCE OR OTHERWISE) ARISING IN ANY WAY OUT OF THE USE OF THIS SOFTWARE, EVEN IF ADVISED OF THE POSSIBILITY OF SUCH DAMAGE.

The Independent JPEG Group's JPEG software. This software is Copyright © 1991-1998, Thomas G. Lane. All Rights Reserved. This software is based in part on the work of the Independent JPEG Group.

libpng, Copyright © 2004 Glenn Randers-Pehrson, which is distributed according to the disclaimer and license (as well as the list of Contributing Authors) at <http://www.libpng.org/pub/png/src/libpng-LICENSE.txt>.

ICU (International Components for Unicode) Copyright 1995-2001 International Business Machines Corporation and others. All rights reserved.

Perl support was developed with the aid of Perl Kit, Version 5.0. Copyright © 1989-2002, Larry Wall. All rights reserved.

Regular Expressions support was derived from copyrighted software written by Henry Spencer, Copyright © 1986 by University of Toronto.

SGML parser: Copyright © 1994, 1995, 1996, 1997, 1998 James Clark, 1999 Matthias Clasen.

XML parser and XSLT processing was developed using Libxml and Libxslt by Daniel Veillard, Copyright © 2001.

Curl software, Copyright ©1996 - 2005, Daniel Stenberg, <daniel@haxx.se>. All rights reserved. Software is used under the following permissions: Permission to use, copy, modify, and distribute this software for any purpose with or without fee is hereby granted, provided that the above copyright notice and this permission notice appear in all copies. THE SOFTWARE IS PROVIDED AS IS, WITHOUT WARRANTY OF ANY KIND, EXPRESS OR IMPLIED, INCLUDING BUT NOT LIMITED TO THE WARRANTIES OF MERCHANTABILITY, FITNESS FOR A PARTICULAR PURPOSE AND NONINFRINGEMENT OF THIRD PARTY RIGHTS. IN NO EVENT SHALL THE AUTHORS OR COPYRIGHT HOLDERS BE LIABLE FOR ANY CLAIM, DAMAGES OR OTHER LIABILITY, WHETHER IN AN ACTION OF CONTRACT, TORT OR

OTHERWISE, ARISING FROM, OUT OF OR IN CONNECTION WITH THE SOFTWARE OR THE USE OR OTHER DEALINGS IN THE SOFTWARE. Except as contained in this notice, the name of a copyright holder shall not be used in advertising or otherwise to promote the sale, use, or other dealings.

The cad2eda program utilizes wxWidgets (formerly wxWindows) libraries for its cross-platform UI API, which is licensed under the wxWindows Library License at <http://www.wxwindows.org>.

LAPACK libraries used are freely available at <http://www.netlib.org/> (authors are Anderson, E. and Bai, Z. and Bischof, C. and Blackford, S. and Demmel, J. and Dongarra, J. and Du Croz, J. and Greenbaum, A. and Hammarling, S. and McKenney, A. and Sorensen, D.).

The following software, which is provided with and called by certain PTC software products, is licensed under the GNU General Public License (<http://www.gnu.org/licenses/gpl.txt>) and is provided AS IS by the authors with no warranty therefrom without even the implied warranty of MERCHANTABILITY or FITNESS FOR A PARTICULAR PURPOSE (see the GNU GPL for more details). Upon request PTC will provide the source code for such software for a charge no more than the cost of performing this distribution:

Ghost Script (<http://www.cs.wisc.edu/~ghost/>);

The PJA (Pure Java AWT) Toolkit library (<http://www.eteks.com/pja/en>).

Launch4j: This program is free software licensed under the GPL license, the head subproject (the code which is attached to the wrapped jars) is licensed under the LGPL license. Launch4j may be used for wrapping closed source, commercial applications.

The following unmodified libraries distributed under the GNU-GPL: libstdc and #ziplib (each are provided pursuant to an exception that permits use of the library in proprietary applications with no restrictions provided that the library is not modified).

Rhino JavaScript engine, distributed with a form of the Mozilla Public License (MPL).

Java Advanced Imaging (JAI) is provided pursuant to the Sun Java Distribution License (JDL) at <http://www.jai.dev.java.net>. The terms of the JDL shall supersede any other licensing terms for PTC software with respect to JAI components.

May include Jena Software © Copyright 2000, 2001, 2002, 2003, 2004, 2005 Hewlett-Packard Development Company, LP. THIS SOFTWARE IS PROVIDED BY THE AUTHOR "AS IS" AND ANY EXPRESS OR IMPLIED WARRANTIES, INCLUDING, BUT NOT LIMITED TO, THE IMPLIED WARRANTIES OF MERCHANTABILITY AND FITNESS FOR A PARTICULAR PURPOSE ARE DISCLAIMED. IN NO EVENT SHALL THE AUTHOR BE LIABLE FOR ANY DIRECT, INDIRECT, INCIDENTAL, SPECIAL, EXEMPLARY, OR CONSEQUENTIAL DAMAGES (INCLUDING, BUT NOT LIMITED TO, PROCUREMENT OF SUBSTITUTE GOODS OR SERVICES; LOSS OF USE, DATA, OR PROFITS; OR BUSINESS INTERRUPTION) HOWEVER CAUSED AND ON ANY THEORY OF LIABILITY, WHETHER IN CONTRACT, STRICT LIABILITY, OR TORT (INCLUDING NEGLIGENCE OR OTHERWISE) ARISING IN ANY WAY OUT OF THE USE OF THIS SOFTWARE, EVEN IF ADVISED OF THE POSSIBILITY OF SUCH DAMAGE. Jena includes:

Jakarta-ORO software developed by the Apache Software Foundation (described above).

ICU4J software Copyright © 1995-2003 International Business Machines Corporation and others  
All rights reserved. Software is used under the following permissions: Permission is hereby

granted, free of charge, to any person obtaining a copy of this software and associated documentation files (the "Software"), to deal in the Software without restriction, including without limitation the rights to use, copy, modify, merge, publish, distribute, and/or sell copies of the Software, and to permit persons to whom the Software is furnished to do so, provided that the above copyright notice(s) and this permission notice appear in all copies of the Software and in supporting documentation. THE SOFTWARE IS PROVIDED "AS IS", WITHOUT WARRANTY OF ANY KIND, EXPRESS OR IMPLIED, INCLUDING BUT NOT LIMITED TO THE WARRANTIES OF MERCHANTABILITY, FITNESS FOR A PARTICULAR PURPOSE AND NONINFRINGEMENT OF THIRD PARTY RIGHTS. IN NO EVENT SHALL THE COPYRIGHT HOLDER OR HOLDERS INCLUDED IN THIS NOTICE BE LIABLE FOR ANY CLAIM, OR ANY SPECIAL INDIRECT OR CONSEQUENTIAL DAMAGES, OR ANY DAMAGES WHATSOEVER RESULTING FROM LOSS OF USE, DATA OR PROFITS, WHETHER IN AN ACTION OF CONTRACT, NEGLIGENCE OR OTHER TORTIOUS ACTION, ARISING OUT OF OR IN CONNECTION WITH THE USE OR PERFORMANCE OF THIS SOFTWARE. Except as contained in this notice, the name of a copyright holder shall not be used in advertising or otherwise to promote the sale, use or other dealings in this Software without prior written authorization of the copyright holder.

May contain script.aculo.us (built on "prototype.conio.net"). Copyright © 2005 Thomas Fuchs (<http://script.aculo.us>, <http://mir.aculo.us>). Software is used under the following permissions: Permission is hereby granted, free of charge, to any person obtaining a copy of this software and associated documentation files (the "Software"), to deal in the Software without restriction, including without limitation the rights to use, copy, modify, merge, publish, distribute, sublicense, and/or sell copies of the Software, and to permit persons to whom the Software is furnished to do so, subject to the following conditions: The above copyright notice and this permission notice shall be included in all copies or substantial portions of the Software. THE SOFTWARE IS PROVIDED "AS IS", WITHOUT WARRANTY OF ANY KIND, EXPRESS OR IMPLIED, INCLUDING BUT NOT LIMITED TO THE WARRANTIES OF MERCHANTABILITY, FITNESS FOR A PARTICULAR PURPOSE AND NONINFRINGEMENT. IN NO EVENT SHALL THE AUTHORS OR COPYRIGHT HOLDERS BE LIABLE FOR ANY CLAIM, DAMAGES OR OTHER LIABILITY, WHETHER IN AN ACTION OF CONTRACT, TORT OR OTHERWISE, ARISING FROM, OUT OF OR IN CONNECTION WITH THE SOFTWARE OR THE USE OR OTHER DEALINGS IN THE SOFTWARE.

Regular expression support is provided by the PCRE library package, which is open source software, written by Philip Hazel, and copyright by the University of Cambridge, England. This software is based in part on the work of the Independent JPEG Group.

antlr-2.7.0.zip - ANTLR parser and lexer generator, version 2.7.0; Provided pursuant to: ANTLR 2 License <http://www.antlr.org/license.html>.

jpeg-6b.zip - JPEG image compression library, version 6.2. Used to create images for HTML output; Provided pursuant to: <http://www.faqs.org/faqs/jpeg-faq/part2>.

lpng120.zip - PNG image library version 1.2.0. <http://www.ijg.org/>; Provided pursuant to: <http://www.libpng.org/pub/png/src/libpng-LICENSE.txt>.

pcre-4.3-2-src.zip - Perl Compatible Regular Expression Library version 4.3. <http://www.pcre.org/>; Provided pursuant to: PCRE License

tiff-v3.4-tar.gz - Libtiff File IO Library version 3.4: (see also <http://www.libtiff.org/> <ftp://ftp.sgi.com/graphics/tiff>) Used by the image EFI library; Provided pursuant to: <http://www.libtiff.org/misc.html>.

zlib-1.2.1.tar.gz - Zip compression library version 1.2.1. <http://www.gzip.org/zlib/>; Provided

pursuant to: Zlib.h License.

The Boost Library - Misc. C++ software from <http://www.boost.org/>; Provided pursuant to: Boost Software License [http://www.boost.org/more/license\\_info.html](http://www.boost.org/more/license_info.html) and [http://www.boost.org/LICENSE\\_1\\_0.txt](http://www.boost.org/LICENSE_1_0.txt).

**UNITED STATES GOVERNMENT RESTRICTED RIGHTS LEGEND**

This document and the software described herein are Commercial Computer Documentation and Software, pursuant to FAR 12.212(a)-(b) (OCT'95) or DFARS 227.7202-1(a) and 227.7202-3(a) (JUN'95), and are provided to the US Government under a limited commercial license only. For procurements predating the above clauses, use, duplication, or disclosure by the Government is subject to the restrictions set forth in subparagraph (c)(1)(ii) of the Rights in Technical Data and Computer Software Clause at DFARS 252.227 7013 (OCT'88) or Commercial Computer Software-Restricted Rights at FAR 52.227 19(c)(1)-(2) (JUN'87), as applicable. 071906

**Parametric Technology Corporation, 140 Kendrick Street, Needham, MA 02494 USA**

# Contents

<b>Change Record</b>	<b>xvi</b>
<b>Windchill Installation Overview</b>	<b>1-1</b>
Installation Order .....	1-1
Basic Windchill Installation on Windows .....	1-3
Windows Installation Directory Structure.....	1-4
Maintenance Software Delivery .....	1-4
Before You Begin .....	1-5
Repeated Values in Installers .....	1-6
Installation Steps.....	1-7
Windchill Product Media .....	1-29

# Change Record

**Table 1 Changes for March 2007 (8.0 M040)**

Section	Description
<a href="#">Installation Steps</a>	Removed RetrievalWare. Added SQL Server and Windchill Index Search.
<a href="#">Step 6A: Install Standalone Oracle</a>	Updated for Oracle 10g.
<a href="#">Step 6C: Install SQL Server</a>	New step for SQL Server.
<a href="#">Step 7: Create Database</a>	Updated for SQL Server.
<a href="#">Step 8: Install Windchill Services</a>	Updated for SQL Server.
<a href="#">Step 11: Create Database User Account and Database Objects</a>	Updated for SQL Server.
<a href="#">Database Software</a>	Add information for SQL Server.

**Table 2 Changes for September 2007 (8.0 M030)**

Section	Description
<a href="#">Installation Steps</a>	Added Arbortext Content Manager solution.
<a href="#">Step 6B: Install Standalone Oracle</a>	Added reference to Oracle 10g 10.2.0.1.0 version database.
<a href="#">Step 9: Install Windchill Solutions</a>	Added Arbortext Content Manager to the list of Windchill solutions.
<a href="#">Database Software</a>	Added reference to Oracle 10g to the Database Software table.

**Table 3 Changes for November 2005**



**Section****Description**[Installation Order](#)

Changed step order to match order given in *Windchill Installation and Configuration Guide - Windchill*; Step 10 became Step 11. These steps can be done in either order.

Updated step information in Step 6a, Step 6b, and Step 12.

[Windchill Product Media](#)

Changed Windchill ESI Adapter to TIBCO Adapter in the Windchill Enterprise Systems Integration table.



# 1

## Windchill Installation Overview

Use this document to get started with the installation of your Windchill solution (including Pro/INTRALINK 8.0). The document contains a basic set of steps that you can use when installing Windchill and a brief description of the CDs included with your product shipment.

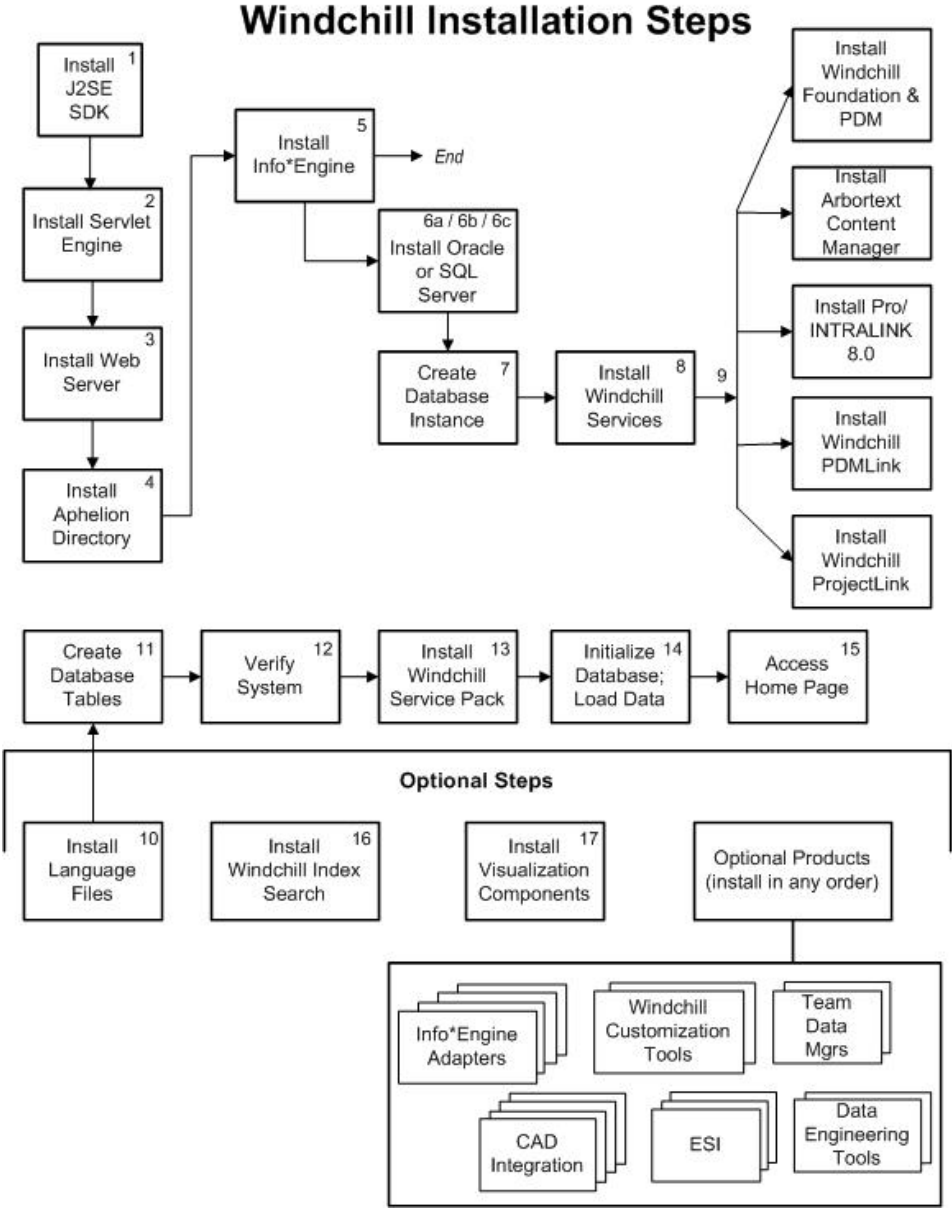
### Installation Order

To get started with installing a Windchill solution, follow the instructions in the *Windchill Info\*Engine Installation and Configuration Guide* ([http://www.ptc.com/view?im\\_dbkey=28479](http://www.ptc.com/view?im_dbkey=28479)). This guide describes how to install Internet Platform Components [Java 2 Platform, Standard Edition (J2SE) Software Development Kit (SDK), Web server, and servlet engine], the Aphelion Directory, and Windchill Info\*Engine. These products must be installed before you can install any Windchill solution. Installing these products is all that is required if you are installing Windchill Info\*Engine standalone.

Next install your Windchill solution, as described in *Windchill Installation and Configuration Guide – Windchill* ([http://www.ptc.com/view?im\\_dbkey=28500](http://www.ptc.com/view?im_dbkey=28500)). Installing a solution includes installing database software, Windchill Services, and one of the solution components (Windchill Foundation & PDM, Windchill PDMLink, Windchill ProjectLink, Arbortext Content Manager, or Pro/INTRALINK 8.0). Installing multiple solutions together can be done only as described in the Windchill Solutions table (which is later in this overview).

After installing a Windchill solution, you can install many of the other Windchill products in any order. Before installing a product, be sure to check the prerequisites that are listed in the **Before You Begin** panel of the installer and described in the associated installation guide.

The following diagram provides a general picture of the product installation order (numbers in the right-hand corner correspond to steps described on the following pages). The steps assume that you are installing all products on the same server:



## Basic Windchill Installation on Windows

A basic Windchill installation on a Microsoft Windows platform assumes the following:

- You are installing all products on the same PC.
- You are using the defaults supplied through the installers (such as those supplied for port numbers and installation directories).
- You are using HTTP rather than HTTPS.
- You are using a single-byte character set (as is the case with English and European languages).
- You do not want to connect to a corporate LDAP directory, but will create any users that are needed through Windchill.
- Your PC is connected to a high-speed network.

This type of installation can be used for demonstration, testing, or proof-of-concept purposes; a production installation almost always has a different set of assumptions. You can use the steps presented later in this overview when doing a basic Windchill installation.

When using Windchill installers, you perform the following common actions for most installers:

Action	Description
Start the installer	<p>For CDs that have only one installer on the CD, the installer starts when you insert the CD (if you have the autorun feature enabled on your PC). Otherwise, start the installer by double-clicking the VBS script at the root of the CD.</p> <p><b>Note:</b> For CDs that have multiple installers on the CD (as is the case for the Windchill Third Party Software CD), there are multiple VBS scripts at the root of the CD. To start the installer for a specific product, select the VBS script that has the corresponding product in the script name. For example, to start the Tomcat installer, run the <code>setup_tomcat.vbs</code> script.</p>
Select the installer language	When the installer begins, select the language you want the installer to use for the text it displays and click <b>OK</b> .
Review the installation prerequisites	The installer displays a <b>Before You Begin</b> panel that summarizes the preinstallation requirements. In most cases, the panel also provides a link to the Windchill software matrix and provides a reference to the guide that has installation details.

Action	Description
Select the installation type	If the installer has options that allow you to install variations of the product, you are presented with a panel that allows you to select the type of installation you want to perform. For the steps described later in this overview, select the <b>Typical</b> installation type.
Select the installation directory	Use the default directory supplied by each installer. As a result, your PC directory structure will be similar to the sample directory structure shown in the next section.
Navigate through installation panels	Most panels have the <b>Cancel</b> , <b>Previous</b> , and <b>Next</b> buttons that allow you to navigate through the installation panels. You can cancel the installation by clicking <b>Cancel</b> at any time. No files are copied to the installation directory until you click <b>Install</b> . Clicking <b>Cancel</b> after clicking <b>Install</b> does not remove any files that have already been copied to the installation directory.

## Windows Installation Directory Structure

After you have completed installing the required third party products and the basic Windchill products using the default installation directories, your C drive has the following directories:

```

SYSTEM (C:)
|
| :
| j2sdk1.4.2_07
| :
| ptc
|  — Apache
|  — Aphelion
|  — tomcat5
|  — Windchill_8.0

```

**Note:** You may have a higher version of J2SE SDK.

Additionally, you have Oracle installed on your system in its own installation directory.

## Maintenance Software Delivery

Some, but not all, Windchill CDs are recut with each Windchill maintenance release. If you are installing Windchill for the first time, you are automatically shipped the latest version of each CD. Additionally, after a maintenance release has occurred, the Windchill Service Pack

CD contains updated code that you should install as part of your installation process. Installing the Windchill Service Pack is included in the steps described in the Installation Steps section.

## Before You Begin

The Windchill solutions are internet enterprise solutions and, depending on your expertise, you may need to do the following before starting the installation process:

- Talk with your IT department to determine your hardware configuration.
- Spend time reading this overview and related installation guides to gather required inputs (such as port numbers, host names, database information, and log in information).
- Contact PTC Technical Support via the PTC Web site (<http://www.ptc.com/support/support.htm>), phone, fax, or e-mail if you encounter problems that prevent you from completing your installation tasks.

When calling about an installation problem, you should have the installation log files available. Up until the point where you have clicked **Install** on the **Review Settings** panel, the log files are written to the temporary directory controlled by the operating system. After you click **Install**, the log files are located in the *<installation directory>/installer/logs* directory.

Before starting the installation process:

- Ensure that you are installing on a supported platform. See the Windchill 8.0 Software Matrix ([http://www.ptc.com/view?im\\_dbkey=26238](http://www.ptc.com/view?im_dbkey=26238)) for supported platforms.
- Close all other applications that are currently running on your computer. This includes any applications that are accessing existing Windchill files (such as a text editor, a windchill shell, or an Acrobat reader viewing previously installed Windchill guides).
- Make sure that the user name under which you log in has administrative permissions.

## Repeated Values in Installers

During the installation process, you are required to enter some information in one installer that is also needed by other installers. The following table provides details on the information you will need to keep track of during the installation process on a Windows system. You can print this table and write down the values you enter as you go through the steps provided in the Installation Steps section.

Step First Entered	Entry Information (Default Value)	Value Entered	Also Required In Step
1 - J2SE SDK	Download directory (C:\j2sdk1.4.2_07 or higher)		2 - Tomcat 4 - Aphelion 5 - Info*Engine
	Web server listener port number (8010)		3 - Apache
	Installation directory (\ptc\tomcat5)		5 - Info*Engine
	Installation directory (\ptc\Apache)		5 - Info*Engine
	Host name		5 - Info*Engine 7 - Create Database 8 - Windchill Services
	Aphelion administrator distinguished name (cn=Manager)		5 - Info*Engine
	Aphelion administrator password		5 - Info*Engine
	Installation directory (\ptc\Windchill_8.0)		8 - Windchill Services 9 - Windchill Solutions 10 - Language Files
	Web context root (Windchill)		15 - Access Home Page
	Database listener port (1521) – Oracle only		7 - Create Database 8 - Windchill Services
	Installation directory		7 - Create Database
7 - Create Database	Database SID (wind)		8 - Windchill Services 11 - Database User Account
	Administrator user name and password		12 - Verify System 15 - Access Home Page
	Database user name (guest) and password (guest)		11 - Database User Account



## Installation Steps

The following set of steps provide a summary of the information you need to do a basic installation of required third party products and Windchill solutions as well as some common optional products. The steps provide many Windows platform-specific details; for UNIX information, see the guide listed in the *Additional Information* box.

**Note:** The disk space required to run third party products and Windchill on a Windows platform is at least 7 gigabytes (5.5 GB for Oracle and the Demo Windchill database; 1.5 GB for all other products). Ensure that the drive you select when installing the products has the required space.

Step 1: Install Java 2 Platform, Standard Edition (J2SE) Software Development Kit (SDK)	Required Step
<i>Description:</i> The J2SE SDK provides a Java development and runtime environment for Windchill.	<i>Additional Information:</i> "Installing Java 2 Platform, Standard Edition Software Development Kit" in the <i>Windchill Info*Engine Installation and Configuration Guide</i> ( <a href="http://www.ptc.com/view?im_dbkey=28479">http://www.ptc.com/view?im_dbkey=28479</a> ) Windchill 8.0 Software Matrix ( <a href="http://www.ptc.com/view?im_dbkey=26238">http://www.ptc.com/view?im_dbkey=26238</a> )
<i>Prerequisites:</i> None	<i>CD:</i> None (download from Web)
<i>Installation Details:</i> Download the J2SE SDK from the Web. For Windows, use <a href="http://java.sun.com">http://java.sun.com</a> . From this site, be sure to select J2SE (Standard) and not J2EE (Enterprise). Also only select the latest version of 1.4.2 (not 1.5). For example, you can select J2SE 1.4.2 SDK from the <b>Popular Downloads</b> side bar. Add the path to the J2SE SDK bin directory to the PATH system environment variable. Set the JAVA_HOME system environment variable to the J2SE SDK installation directory.	
<i>Special Considerations:</i> See the <i>Windchill Info*Engine Installation and Configuration Guide</i> for URLs to other download sites.	

Step 2: Install a Servlet Engine	Required Step
<p><i>Description:</i> The servlet engine extends the functionality of the Web server by managing the data transfer between the Windchill application server and the client. The Tomcat servlet engine is bundled with Windchill and has an automated configuration.</p>	<p><i>Additional Information:</i> "Installing and Configuring a Web Server and Servlet Engine" in the <i>Windchill Info*Engine Installation and Configuration Guide</i>  <a href="http://www.ptc.com/view?im_dbkey=28479">http://www.ptc.com/view?im_dbkey=28479</a>  Windchill 8.0 Software Matrix  <a href="http://www.ptc.com/view?im_dbkey=26238">http://www.ptc.com/view?im_dbkey=26238</a></p>
<p><i>Prerequisites:</i> J2SE SDK installed</p>	<p><i>CD:</i> Windchill Third Party Software - Tomcat Servlet Engine if Tomcat is the desired servlet engine</p>
<p><i>Installation Details:</i></p> <ul style="list-style-type: none"> <li>○ Windows setup script to run: setup_tomcat.vbs.</li> <li>○ Tomcat port numbers for listening (default: 8010) and shutdown (default: 8006)</li> <li>○ Do not start Tomcat at this time.</li> </ul>	
<p><i>Special Considerations:</i> If you are installing a servlet engine other than Tomcat, see the <i>Windchill Info*Engine Installation and Configuration Guide</i> for instructions.</p>	

Step 3: Install a Web Server	Required Step
<p><i>Description:</i> The front-end authentication mechanism for your Windchill Web application. The Apache Web server is bundled with Windchill and has an automated configuration.</p>	<p><i>Additional Information:</i> "Installing and Configuring a Web Server and Servlet Engine" in the <i>Windchill Info*Engine Installation and Configuration Guide</i> (<a href="http://www.ptc.com/view?im_dbkey=28479">http://www.ptc.com/view?im_dbkey=28479</a>) Windchill 8.0 Software Matrix (<a href="http://www.ptc.com/view?im_dbkey=26238">http://www.ptc.com/view?im_dbkey=26238</a>)</p>
<p><i>Prerequisites:</i> None (although not required, steps 1 and 2 should be completed first)</p>	<p><i>CD:</i> Windchill Third Party Software - Apache Web server if Apache is the desired Web server</p>
<p><i>Installation Details:</i></p> <ul style="list-style-type: none"> <li>○ Windows setup script to run: setup_apache.vbs.</li> <li>○ DNS registered host name for machine with Apache (installer provides default: localhost)</li> <li>○ HTTP port (default: 80) and HTTPS port (default: 443) for Apache If using HTTPS for systems that require high security, certificates to enable HTTPS E-mail address of Apache administrator (installer provides default; modify default if it is not valid)</li> <li>○ Host name for Tomcat (if installed on different system) and Tomcat port number (default: 8010)</li> </ul>	
<p><i>Special Considerations:</i> If you are installing a Web server other than Apache, see the <i>Windchill Info*Engine Installation and Configuration Guide</i> for instructions.</p>	

<b>Step 4: Install Aphelion LDAP Directory</b>	<b>Required Step</b>
<p><i>Description:</i> Aphelion is an LDAP-compliant enterprise directory that is bundled with Windchill. Aphelion is required for managing Windchill operation definitions. It can also optionally manage Windchill user information.</p>	<p><i>Additional Information:</i> "Installing Aphelion Directory 8.0" in the <i>Windchill Info*Engine Installation and Configuration Guide</i> (<a href="http://www.ptc.com/view?im_dbkey=28479">http://www.ptc.com/view?im_dbkey=28479</a>)  Windchill 8.0 Software Matrix (<a href="http://www.ptc.com/view?im_dbkey=26238">http://www.ptc.com/view?im_dbkey=26238</a>)  <i>Aphelion Directory 2003.2 Administration Guide</i>  <i>JNDI Adapter Guide</i></p>
<p><i>Prerequisites:</i> J2SE SDK installed  Both Tomcat and Apache installed (for installing Aphelion Web tools)</p>	<p>CD: Aphelion Directory Server for Windchill</p>
<p><i>Installation Details:</i></p> <ul style="list-style-type: none"> <li>○ Windows setup script to run: setup.vbs (starts automatically when you insert the CD). J2SE SDK directory</li> <li>○ Aphelion administrator distinguished name (default: cn=Manager)  Aphelion administrator password</li> <li>○ Aphelion server port number (default: 389)</li> <li>○ Aphelion naming context (leave blank)</li> <li>○ The administrator name and administrator group name</li> <li>○ Tomcat and Apache directories (if installing Aphelion Web Tools in a Custom installation)</li> </ul> <p>The Aphelion services are automatically started when the installation completes.</p>	
<p><i>Special Considerations:</i> To configure a Web browser for the Aphelion Web Tools, see the <i>Windchill Info*Engine Installation and Configuration Guide</i> for instructions. To configure Windchill to use an existing enterprise directory server for users, see the <i>Windchill Installation and Configuration Guide - Windchill</i> for instructions.</p>	

<b>Step 5: Install Info*Engine</b>	<b>Required Step</b>
<p><i>Description:</i> Info*Engine provides a mechanism for retrieving and manipulating data.</p>	<p><i>Additional Information:</i> "Installing Info*Engine" in the <i>Windchill Info*Engine Installation and Configuration Guide</i> (<a href="http://www.ptc.com/view?im_dbkey=28479">http://www.ptc.com/view?im_dbkey=28479</a>) Windchill 8.0 Software Matrix (<a href="http://www.ptc.com/view?im_dbkey=26238">http://www.ptc.com/view?im_dbkey=26238</a>)</p>
<p><i>Prerequisites:</i> J2SE SDK and Aphelion installed; Aphelion running Both Tomcat and Apache installed if you want the installer to configure them.</p>	<p><i>CD:</i> Windchill Info*Engine</p>
<p><i>Installation Details:</i></p> <ul style="list-style-type: none"> <li>○ Windows setup script to run: setup.vbs (starts automatically when you insert the CD).</li> <li>○ J2SE SDK directory</li> <li>○ The Web context root for Windchill (default: Windchill)</li> <li>○ DNS registered host name where Info*Engine is being installed (installer provides default)</li> <li>○ Information to connect Info*Engine to Aphelion including: <ul style="list-style-type: none"> <li>– DNS registered host name where Aphelion is installed (installer defaults to host currently on)</li> <li>– Port number Aphelion listens on (default: 389)</li> <li>– Distinguished name of the LDAP directory manager (default: cn=Manager)</li> <li>– Password for LDAP manager</li> <li>– Distinguished name of the LDAP configuration properties base</li> </ul> </li> <li>○ Directories where Tomcat and Apache are installed (Typical installation)</li> <li>○ Location for Windows shortcut (default: Windchill 8.0)</li> </ul>	
<p><i>Special Considerations:</i> If you are installing Info*Engine standalone, you can skip the remaining steps.</p>	

<b>Step 6a: Install Bundled Oracle (Pro/INTRALINK 8.0 only)</b>	<b>Required Step</b>
<p><i>Description:</i> Oracle provides persistent data storage for Windchill. If you have purchased Pro/INTRALINK 8.0 with a bundled version of the Oracle Relational Database Management System (RDBMS) software, continue with this step and skip Step 6b. If you have not purchased Pro/INTRALINK 8.0 with a bundled version of the Oracle Relational Database Management System (RDBMS) software, go to Step 6b.</p>	<p><i>Additional Information:</i> "Installing Oracle for Pro/INTRALINK 8.0 (Bundled Oracle)" in the <i>Windchill Installation and Configuration Guide – Windchill</i>  <a href="http://www.ptc.com/view?im_dbkey=28500">http://www.ptc.com/view?im_dbkey=28500</a>)  Windchill 8.0 Software Matrix  <a href="http://www.ptc.com/view?im_dbkey=26238">http://www.ptc.com/view?im_dbkey=26238</a>)</p>
<p><i>Prerequisites:</i> None  Installing on Windows does not require that an additional 1.3.1 JDK be installed.</p>	<p><i>CDs:</i></p> <ul style="list-style-type: none"> <li>o Pro/INTRALINK Oracle Software Assistant</li> <li>o Pro/INTRALINK Oracle CDs and Patch Set CD</li> </ul>
<p><i>Installation Details:</i></p> <ul style="list-style-type: none"> <li>o On Windows, you must be logged in as a user with administrator privileges to install Oracle. For example, users in the Administrators group that have an associated Windows domain can install Oracle.</li> <li>o Windows setup script to run: setup.vbs (starts automatically when you insert the Pro/INTRALINK Oracle Software Assistant CD).</li> <li>o The Pro/INTRALINK Oracle Software Assistant (OSA) guides you through the installation of the Oracle software. <ul style="list-style-type: none"> <li>- Insert Oracle CDs as prompted.</li> <li>- Close the Oracle autorun window when it appears.</li> <li>- For the Patch Set, browse to <b>Disk1</b> on the CD to locate the Patch Set source.</li> <li>- After the Patch Set CD is processed, you are prompted to insert the OSA CD again. Close the resulting startup window that appears.</li> </ul> </li> </ul> <p>The following are set for you:</p> <ul style="list-style-type: none"> <li>o Oracle database listener port: 1521 (default)</li> <li>o Oracle installation directory: C:\ptc\osa\oraprod</li> </ul>	
<p><i>Special Considerations:</i> The Oracle Software Assistant is available only to those who have purchased the bundled version of the Oracle Relational Database Management System (RDBMS) software.</p>	

<b>Step 6b: Install Standalone Oracle</b>	<b>Required Step</b>
<p><i>Description:</i> Oracle provides persistent data storage for Windchill. The term standalone Oracle applies to the Oracle Relational Database Management System (RDBMS) software obtained either directly from Oracle or purchased from PTC for use with a Windchill solution other than Pro/INTRALINK 8.0.</p>	<p><i>Additional Information:</i> "Installing Oracle" in the <i>Windchill Installation and Configuration Guide – Windchill</i>  <a href="http://www.ptc.com/view?im_dbkey=28500">http://www.ptc.com/view?im_dbkey=28500</a>)</p>
<p><i>Prerequisites:</i> None</p>	<p><i>CD:</i> Oracle CDs and any required patches (as listed in the Windchill 8.0 Software Matrix  <a href="http://www.ptc.com/view?im_dbkey=26238">http://www.ptc.com/view?im_dbkey=26238</a>)</p>
<p><i>Installation Details:</i></p> <p>Oracle Product for all editions:</p> <ul style="list-style-type: none"> <li>o Oracle 9i product to install: Oracle 9i Database 9.2.0.1.0</li> <li>o Oracle 10g: Installation Method: Advanced Installation</li> <li>o Installation Type: Custom</li> <li>o Oracle 9i: Select only the following Product Components: <ul style="list-style-type: none"> <li>- Oracle</li> <li>- Oracle Net Services <ul style="list-style-type: none"> <li>Oracle Net Listener</li> <li>Oracle Connection Manager</li> </ul> </li> <li>- Oracle Enterprise Manager Products <ul style="list-style-type: none"> <li>Oracle Intelligent Agent</li> <li>Enterprise Manager Client</li> </ul> </li> <li>- Oracle Development Kit <ul style="list-style-type: none"> <li>Oracle C++ Call Interface</li> <li>Oracle Call Interface (OCI)</li> <li>Oracle Programmer</li> </ul> </li> <li>- Oracle JDBC/OCI Interfaces</li> </ul> </li> <li>o Oracle 10g: Select one the following Product Components: <ul style="list-style-type: none"> <li>- Oracle Database 10g</li> <li>- Oracle Enterprise Manager Console DB</li> <li>- Oracle Net Services <ul style="list-style-type: none"> <li>Oracle Net Listener</li> <li>Oracle Connection Manager</li> </ul> </li> </ul> </li> </ul>	

<ul style="list-style-type: none"> <li>- Oracle Call Interface (OCI)</li> <li>- Oracle Programmer</li> <li>- Oracle XML Development Kit</li> <li>- Oracle Windows Interfaces</li> <li>    Oracle ODBC Driver</li> </ul> <ul style="list-style-type: none"> <li>o Oracle MTS Recovery Service Port Number: 2030 (default)</li> <li>o Component Locations: use the defaults</li> <li>o Oracle 9i: Create Database: No</li> <li>o Oracle 10g: Create Database: Install Database Software Only</li> <li>o Oracle Net Configuration Assistant <ul style="list-style-type: none"> <li>- Directory Usage Configuration: defer configuration</li> <li>- Listener Name: LISTENER (default)</li> <li>- Select Protocols: TCP (default)</li> <li>- Use standard port number of 1521 <ul style="list-style-type: none"> <li>- Configure another listener: No (default)</li> </ul> </li> </ul> </li> <li>o Change naming methods configured: No (default)</li> </ul> <p>Oracle Patch:</p> <ul style="list-style-type: none"> <li>o Download and install the 9.2.0.5.0 (or higher) patch from <a href="http://metalink.oracle.com/">http://metalink.oracle.com/</a>  After logging in, you can download the patch from the <b>Patches</b> section on the MetaLink site.</li> </ul>
<p><i>Special Considerations:</i> Do not create the Windchill database using Oracle tools. This will be done in the next step using Windchill tools.</p>



Step 6c: Install SQL Server	Required Step
<p><i>Description:</i> SQL Server provides persistent data storage for Windchill. The SQL Server software is for use with a Windchill solution other than Pro/INTRALINK 8.0.</p>	<p><i>Additional Information:</i> "Installing SQL Server" in the <i>Windchill Installation and Configuration Guide – Windchill</i>  <a href="http://www.ptc.com/view?im_dbkey=28500">http://www.ptc.com/view?im_dbkey=28500</a>)</p>
<p><i>Prerequisites:</i> None</p>	<p><i>CD:</i> SQL Server CDs and any required patches (as listed in the Windchill 8.0 Software Matrix  <a href="http://www.ptc.com/view?im_dbkey=26238">http://www.ptc.com/view?im_dbkey=26238</a>)</p>
<p><i>Installation Details:</i>  SQL Server product for all editions:</p> <ul style="list-style-type: none"> <li>o Product to install: SQL Server 2005 Enterprise Edition, Standard Edition, or Workgroup Edition.</li> <li>o Autorun: Server components, tools, Books Online, and Samples.</li> <li>o End User License Agreement: I accept the licensing terms and conditions</li> <li>o Registration Information: <ul style="list-style-type: none"> <li>- User name</li> <li>- Company name</li> </ul> </li> <li>o Components to Install: <ul style="list-style-type: none"> <li>- SQL Server Database Services</li> <li>- Workstation components, Books Online and development tools</li> </ul> </li> <li>o Instance Name: Select default or named Instance. Default instance represents the machine on which SQL Server is installed.</li> <li>o Service Account: <ul style="list-style-type: none"> <li>- Select Use the built-in System Account option.</li> <li>- Start services at the end of setup: select all available options.</li> </ul> </li> <li>o Authentication Mode: Mixed Mode (provide login for user SA required)</li> <li>o SQL collations: Dictionary order, case-sensitive, for use with 1252 character set</li> <li>o Error and Usage Report Settings: use the defaults</li> </ul>	
<p><i>Special Considerations:</i> Do not create the Windchill database using SQL Server tools. This will be done in the next step using Windchill tools.</p>	

Step 7: Create Database Instance	Required Step
<p><i>Description:</i> Use the Oracle Configuration Utility (OCU) or SQL Server Configuration Utility (SCU) to create the Windchill database.</p>	<p><i>Additional Information:</i> "Creating the Oracle Database" or "Creating the SQL Server Database" chapters in the <i>Windchill Installation and Configuration Guide – Windchill</i>  <a href="http://www.ptc.com/view?im_dbkey=28500">http://www.ptc.com/view?im_dbkey=28500</a></p>
<p><i>Prerequisites:</i></p> <ul style="list-style-type: none"> <li>o J2SE SDK installed</li> <li>o Oracle RDBMS database installed (Not applicable to SQL Server)</li> <li>o Logged in as the user who installed the database (DBA)</li> </ul>	<p>CD: Windchill Third Party Software – Oracle Configuration Utility or SQL Server Configuration Utility</p>
<p><i>Oracle Installation Details:</i></p> <ul style="list-style-type: none"> <li>o Set the ORACLE_HOME system environment variable to the Oracle installation directory.</li> <li>o Windows setup script to run: setup_ocu.vbs.</li> <li>o Oracle installation directory (default: uses ORACLE_HOME variable)</li> <li>o OCU installation directory (use default)</li> <li>o Select <b>Demo/Test</b> (default) for the size of the database</li> <li>o Use host name of your computer for the <b>Database Host Name</b> (replace hostname)</li> <li>o Oracle Database Listener Port Number (default 1521)</li> <li>o Oracle Database SID (default wind)</li> </ul> <p><i>SQL Server Installation Details:</i></p> <ul style="list-style-type: none"> <li>o Windows setup script to run: setup_scu.vbs.</li> <li>o Select <b>Create Database</b> configuration type</li> <li>o SQL Server installation directory</li> <li>o Select <b>Demo/Test</b> (default) for the size of the database</li> <li>o Use host name of your computer for the <b>Database Host Name</b> (replace hostname)</li> <li>o SQL Server name</li> <li>o SQL Server port number</li> <li>o Password for user SA</li> <li>o SQL Server database name</li> </ul>	
<p><i>Special Considerations:</i> To create a database, you must log on under the name of the user that installed the Oracle software. See the <i>Windchill Installation and Configuration</i></p>	

*Guide - Windchill* for instruction details. **Note:** This step creates an empty database; in Step 10, you create the database tables.

<b>Step 8: Install Windchill Services</b>	<b>Required Step</b>
<i>Description:</i> Windchill Services is the platform code common to all Windchill solutions.	<i>Additional Information:</i> "Installing Windchill Services" in the <i>Windchill Installation and Configuration Guide – Windchill</i> ( <a href="http://www.ptc.com/view?im_dbkey=28500">http://www.ptc.com/view?im_dbkey=28500</a> )
<i>Prerequisites:</i> <ul style="list-style-type: none"> <li>o Info*Engine installed and configured</li> <li>o Aphelion server is installed and running</li> <li>o Oracle installed and Windchill database created</li> </ul>	CD: Windchill Services
<i>Installation Details:</i> <ul style="list-style-type: none"> <li>o Windows setup script to run: setup_wnc.vbs (starts automatically when you insert the CD).</li> <li>o <b>Typical</b> installation type</li> <li>o Identifier value for the Windchill server (default: Windchill)</li> <li>o A name and password for the user that will administer the Windchill system The organization name and internet domain name of the organization for which this installation of Windchill applies (the names will be used when defining the organization owner of the Site and loading a host organization container)</li> <li>o Oracle or SQL Server database schema: user name and password (will be used when creating the database user account)</li> <li>o Java Database Connection (JDBC) variables (set when you installed and created the database) <ul style="list-style-type: none"> <li>- Oracle or SQL Server Database Host Name - Host name of your computer</li> <li>- (Oracle) Database Port Number - Port number Oracle listens on (default 1521)</li> <li>- (Oracle) Database System Identifier (SID) - Name of the Oracle database (default wind)</li> </ul> </li> <li>o Installation directory; must be same as Info*Engine installation directory (default: \ptc\Windchill_8.0)</li> </ul>	
<i>Special Considerations:</i> To learn about the administrators and containers used in your Windchill solution, see the <i>Windchill Business Administrator's Guide</i> . For Pro/INTRALINK 8.0 specific information, see the <i>Getting Started with Pro/INTRALINK 8.0</i> guide.	

<b>Step 9: Install Windchill Solutions</b>	<b>Required Step</b>
<p><i>Description:</i> You can install any of the following Windchill solutions:</p> <ul style="list-style-type: none"> <li>o Windchill PDMLink</li> <li>o Windchill ProjectLink</li> <li>o Windchill Foundation &amp; PDM</li> <li>o Arbortext Content Manager</li> <li>o Pro/INTRALINK 8.0</li> </ul>	<p><i>Additional Information:</i></p> <p>"Windchill Services and Windchill Solutions Section" in the <i>Windchill Installation and Configuration Guide – Windchill</i></p> <p>(<a href="http://www.ptc.com/view?im_dbkey=28500">http://www.ptc.com/view?im_dbkey=28500</a>)</p>
<p><i>Prerequisites:</i></p> <ul style="list-style-type: none"> <li>o Windchill Services installed and configured</li> </ul>	<p><i>CD:</i> You may have one or more of the following CDs:</p> <ul style="list-style-type: none"> <li>o Windchill PDMLink</li> <li>o Windchill ProjectLink</li> <li>o Windchill Foundation &amp; PDM</li> <li>o Arbortext Content Manager</li> <li>o Pro/INTRALINK 8.0</li> </ul>
<p><i>Installation Details:</i></p> <ul style="list-style-type: none"> <li>o Windows setup script to run: setup.vbs (starts automatically when you insert the CD).</li> <li>o Installation directory of Windchill Services (default: \ptc\Windchill_8.0)</li> </ul>	
<p><i>Special Considerations:</i> Windchill solutions must be installed in the same directory where you installed Windchill Services. For information about installing multiple solutions, see the Windchill Solutions table, later in this document. For details on the installations, see the <i>Windchill Installation and Configuration Guide - Windchill</i>.</p>	

<b>Step 10: Install Language Files</b>	<b>Optional Step</b>
<i>Description:</i> The Windchill MultiLanguage Pack provides the locale files for Windchill solutions.	<i>Additional Information:</i> "Installing Language Files" in the <i>Windchill Installation and Configuration Guide – Windchill</i> ( <a href="http://www.ptc.com/view?im_dbkey=28500">http://www.ptc.com/view?im_dbkey=28500</a> )
<i>Prerequisites:</i> Windchill Services and all Windchill solutions installed	<i>CD:</i> MultiLanguage Pack CDs: CD 1 - European languages CD 2 - Asian languages
<i>Installation Details:</i> <ul style="list-style-type: none"> <li>o Windows setup script to run: setup.vbs (starts automatically when you insert the CD).</li> <li>o Installation directory of Windchill Services (default: \ptc\Windchill_8.0)</li> <li>o Locales to install</li> </ul>	
<i>Special Considerations:</i> This installation is not needed in environments where only English is used. If a Windchill solution is installed after installing language files, the language files must be installed again so that the files for the new solution are installed.	

<b>Step 11: Create Database User Account and Database Objects</b>	<b>Required Step</b>
<p><i>Description:</i> Use the Oracle Configuration Utility (OCU) or SQL Server Configuration Utility (SCU) to create the Windchill database user account and database objects (including database tables).</p>	<p><i>Additional Information:</i> "Creating a Windchill Database User Account and Database Objects for Oracle" or "Creating a Windchill Database User Account and Database Objects for SQL Server" in the <i>Windchill Installation and Configuration Guide – Windchill</i>  <a href="http://www.ptc.com/view?im_dbkey=28500">http://www.ptc.com/view?im_dbkey=28500</a>)</p>
<p><i>Prerequisites:</i></p> <p>For Oracle:</p> <ul style="list-style-type: none"> <li>o The Oracle client software installed on the local system, or the Oracle server installed of which the Oracle client is a subset</li> <li>o Configured the database service name</li> <li>o Created your database using OCU</li> <li>o Installed Windchill Services</li> <li>o Write permissions set for the &lt;Windchill&gt;/db/sql directory for the user doing the installation</li> </ul> <p>For SQL Server:</p> <ul style="list-style-type: none"> <li>o Created your database using SCU</li> <li>o Installed Windchill Services</li> </ul>	<p>CD: Windchill Third Party Software – Oracle Configuration Utility or Windchill Third Party Software – SQL Server Configuration Utility</p>
<p><i>Installation Details:</i></p> <p>For Oracle:</p> <ul style="list-style-type: none"> <li>o Log in under the name of the user that installed the Oracle software</li> <li>o Windows setup script to run: setup_ocu.vbs</li> <li>o Select <b>Create User Account and Database Objects</b> configuration type</li> <li>o Oracle Server Software installation directory (default: uses ORACLE_HOME variable)</li> <li>o OCU installation directory (use default)</li> </ul>	

- o Connect to Database:
  - Password to use for the database user System
  - The service name of the database where the user account will be created. By default, this is the Oracle database system identifier (SID) (default wind)
- o A user name and password to define and create the database schema. (defaults are guest). These values must match the **Database User Name** and **Database User Password** that you specified during the Windchill Services installation.
- o The names of the default tablespace (default is USERS) and the temporary tablespace (default is TEMP).
- o The location of the create\_ddl\_wt.sql file. This file is bundled with Windchill Services and it is located in the <Windchill>/db/sql/ directory.

For SQL Server:

- o Log in under the name of the user that installed the SQL Server software
- o Windows setup script to run: setup\_scu.vbs
- o Select **Create User Account and Database Objects** configuration type
- o SCU installation directory (use default)
- o Windchill Services Installation directory
- o Database Properties:
  - The name of the SQL Server instance.
  - The port number for the SQL Server Instance (use default).
  - The password for the user SA.
  - The name of the database where the user account will be created.
- o Create User Account:
  - A user name and password to define and create the database schema. (defaults are guest). These values must match the **Database User Name** and **Database User Password** that you specified during the Windchill Services installation.
- o The location of the create\_ddl\_wt.bat file. This file is bundled with Windchill Services and it is located in the <Windchill>/db/sqlServer/create\_ddl\_wt.bat directory.

*Special Considerations:* To support a multi-byte character set such as Japanese, you must configure DDL SQL scripts for multi-byte character sets before doing this step. See the *Windchill Installation and Configuration Guide - Windchill* for instruction details.



Step 12: Verify System Configuration	Required Step
<p><i>Description:</i> Ensure that the Web server, servlet engine are correctly configured to work with the solution and its' application server.</p>	<p><i>Additional Information:</i> "Starting and Stopping Windchill" in the <i>Windchill Installation and Configuration Guide – Windchill</i>  <a href="http://www.ptc.com/view?im_dbkey=28500">http://www.ptc.com/view?im_dbkey=28500</a></p>
<p><i>Prerequisites:</i></p> <ul style="list-style-type: none"> <li>o All Internet platform components installed</li> <li>o All Windchill components installed</li> <li>o Database components installed</li> <li>o Windchill solution installed</li> </ul>	<p>CD: None</p>
<p><i>Verification Details:</i></p> <ul style="list-style-type: none"> <li>o Start Apache and Tomcat.  On Windows, click <b>Programs</b> from your <b>Start</b> menu. From this menu, select the Windchill solution (<b>Windchill_8.0</b>, by default) and then select <b>Apache</b>. After Apache starts, select <b>Tomcat</b> from the same <b>Programs &gt; Windchill_8.0</b> menu.  <b>Tip:</b> You can minimize the Apache and Tomcat windows, but do not close them.</li> <li>o Then start the Windchill method server.  On Windows, click <b>Programs &gt; Windchill_8.0</b> from your <b>Start</b> menu. Then select <b>Windchill Method Server</b>.</li> <li>o Verify authentication by executing the following command in a <b>Windchill Shell</b> window:  <pre>windchill wt.auth.Authentication</pre> On Windows, open a <b>Windchill Shell</b> window by clicking <b>Programs &gt; Windchill_8.0</b> from your <b>Start</b> menu. Then select <b>Windchill Shell</b>.</li> <li>o When you are prompted to log in, enter the administrator and password that was created in Step 8.  If the login is successful, your verification is complete.</li> </ul>	
<p><i>Special Considerations:</i> For details, see <i>Windchill Installation and Configuration Guide - Windchill</i>.</p>	

<b>Step 13: Install Windchill Service Pack</b>	<b>Required Step</b>
<i>Description:</i> The Windchill Service Pack delivers corrective code for all products that are not re-cut in the maintenance stream.	<i>Additional Information:</i> <i>Windchill Maintenance Installation and Configuration Guide</i>
<i>Prerequisites:</i> Windchill solution installed	<i>CD:</i> Windchill Service Pack
<i>Installation Details:</i> See the <i>Windchill Maintenance Installation and Configuration Guide</i> .	
<i>Special Considerations:</i> <b>Note:</b> This product is only available after at least one maintenance release has occurred for Windchill 8.0.	

Step 14: Initialize Windchill Database and Load Data	Required Step
<p><i>Description:</i> The Windchill database must be initialized with at least the administration and data definitions (base data).</p>	<p><i>Additional Information:</i> "Database Initializing and Data Loading" in the <i>Windchill Installation and Configuration Guide – Windchill</i>  <a href="http://www.ptc.com/view?im_dbkey=28500">http://www.ptc.com/view?im_dbkey=28500</a></p>
<p><i>Prerequisites:</i></p> <ul style="list-style-type: none"> <li>o Windchill Services and all Windchill solutions installed</li> <li>o Language files installed</li> </ul>	<p>CD: None</p>
<p><i>Installation Details:</i></p> <p>Windchill provides a data load utility, WindchillLoader, to load the Windchill database with the required base data and the optional demonstration data.</p> <p>Run the WindchillLoader from a windchill shell using the windchill command. On Windows: click <b>Programs</b> &gt; <b>Windchill_8.0</b> from your <b>Start</b> menu. Then select <b>Windchill Shell</b>.</p> <ul style="list-style-type: none"> <li>o To load the only base data for all installed Windchill solutions, enter the following in the windchill shell window:  <code>windchill wt.load.WindchillLoader -All</code></li> <li>o To load both the base data and demonstration data for all installed Windchill solutions, enter the following in the windchill shell window:  <code>windchill wt.load.WindchillLoader -All -IncludeDemo</code></li> </ul> <p><b>Note:</b> If you want to load localized data (for example, for a non-English locale), then you must first configure the load sets to handle the localized data. See the <i>Windchill Installation and Configuration Guide - Windchill</i> for instructions.</p>	
<p><i>Special Considerations:</i> This step initializes the database with version information and loads demonstration data for examples. For other options, see, <i>Windchill Installation and Configuration Guide - Windchill</i>.</p>	

Step 15: Access Windchill Solution Home Page	Required Step
<p><i>Description:</i> You can verify that your installed Windchill solution is available by accessing its home page.</p>	<p><i>Additional Information:</i> "Starting and Stopping Windchill" in the <i>Windchill Installation and Configuration Guide – Windchill</i>  <a href="http://www.ptc.com/view?im_dbkey=28500">http://www.ptc.com/view?im_dbkey=28500</a>)</p>
<p><i>Prerequisites:</i></p> <ul style="list-style-type: none"> <li>o Tomcat, Apache, Windchill Services and all Windchill solutions installed and running See Step 12 for startup tips.</li> <li>o Database initialized and data loaded as described in step 14</li> </ul>	<p>CD: None</p>
<p><i>Details:</i> On Windows: click <b>Programs</b> &gt; <b>Windchill_8.0</b> from your <b>Start</b> menu. Then select <b>Windchill Home Page</b>. Otherwise, enter in your Web browser: <a href="http://localhost/Windchill">http://localhost/Windchill</a> (this URL assumes you are on the computer where Windchill is installed and have used the default port number for Apache and used the default of Windchill for the Web context root in Step 5) When you are prompted to log in, enter the administrator and password that was created in Step 8.</p>	
<p><i>Special Considerations:</i> Additional steps are required before allowing users access to the solution; see the What's Next Summary chapter in the <i>Windchill Installation and Configuration Guide - Windchill</i>.</p>	

<b>Step 16: Install Windchill Index Search</b>	<b>Optional Step</b>
<p><i>Description:</i> Windchill Index Search is a full text search engine.</p>	<p><i>Additional Information:</i> <i>Windchill Installation and Configuration Guide – Windchill Index Search</i></p> <p>Windchill 8.0 Software Matrix  <a href="http://www.ptc.com/view?im_dbkey=26238">http://www.ptc.com/view?im_dbkey=26238</a>)</p>
<p><i>Prerequisites:</i> Web server and servlet engine installed</p>	<p><i>CD:</i> Windchill Index Search CD for operating system</p>
<p><i>Installation Details:</i> For installing Windchill Index Search on Windows:</p> <ul style="list-style-type: none"> <li>o User name used for running Windchill Index Search. Note: The user must have permission to run as a service on Windows.</li> <li>o Installation location</li> <li>o The base port number</li> <li>o License is installed automatically</li> </ul> <p>For UNIX installations, see the <i>Windchill Installation and Configuration Guide – Windchill Index Search</i></p>	
<p><i>Special Considerations:</i> Windchill Index Search can be installed before or after Windchill. See the <i>Windchill Installation and Configuration Guide – Windchill Index Search</i> for instruction details. Windchill Index Search can be installed locally on the same server as Windchill or on a remote host. Windchill Index Search will use 4000 ports following the configured base port.</p> <p><b>Note:</b> The Pro/INTRALINK 8.0 solution does not support Windchill Index Search. Therefore, this step does not apply to Pro/INTRALINK 8.0 installations.</p>	

<b>Step 17: Install ProductView Collaboration</b>	<b>Optional Step</b>
<i>Description:</i> Provides components needed to support ProductView on Windchill. The components include ProductView Lite, thumbnail generator, thumbnail viewer, and collaboration agent.	<i>Additional Information:</i> Windchill Installation and Configuration Guide - Visualization Services ( <a href="http://www.ptc.com/view?im_dbkey=39979">http://www.ptc.com/view?im_dbkey=39979</a> )
<i>Prerequisites:</i> Windchill Services installed	<i>CD:</i> Visualization - Windchill Support
<i>Installation Details:</i> Must be installed into the Windchill Services installation directory	
<i>Special Considerations:</i> Additionally, install other Visualization products; see the Windchill Visualization table.	

## Windchill Product Media

The following tables provide a brief description of the CDs included in your Windchill shipment. The tables present a functional grouping of the CDs so that you can organize your installation. For completeness, optional products that you may not have purchased and products that are not yet available are also listed here.

Included in each table is the **Installation Instructions** column. This column lists the guide you can use when installing the product and the location of the guide in the CD set. These guides are also accessible from the PTC Reference Document Web site at <http://www.ptc.com/appserver/cs/doc/refdoc.jsp>. For your document search criteria, select your product from the product drop-down list and select 8.0 for the release.

Internet Platform Components			
<p>The following required Internet platform components provide the Internet infrastructure necessary for your Windchill installation. Other platform components are supported, but not bundled. For more information, see the Windchill 8.0 Software Matrix (<a href="http://www.ptc.com/view?im_dbkey=26238">http://www.ptc.com/view?im_dbkey=26238</a>). Each component has its own installation program. Downloading a Java 2 Software Development Kit (SDK) is a prerequisite to installing these components. Information about J2SE SDK installation can be found in the <i>Windchill Info*Engine Installation and Configuration Guide</i>, located in the Docs directory on the Windchill Info*Engine CD.</p>			
Internet Platform Component	CD Name	Installation Instructions	Installed in Windchill Directory
Tomcat Servlet Engine	Windchill Third Party Software	<i>Windchill Info*Engine Installation and Configuration Guide</i> , located in the Docs directory on the Windchill Info*Engine CD	No
Apache Web Server	Windchill Third Party Software	<i>Windchill Info*Engine Installation and Configuration Guide</i> , located in the Docs directory on the Windchill Info*Engine CD	No
Aphelion LDAP Directory	Aphelion Directory Server for Windchill	<i>Windchill Info*Engine Installation and Configuration Guide</i> , located in the Docs directory on the Windchill Info*Engine CD	No
Windchill Index Search	Windchill Index Search (4 CDs, one for each platform)	<i>Windchill Installation and Configuration Guide –Windchill Index Search</i> , located in the Docs directory on the Windchill Services	No

		CD	
Java Runtime Environment (JRE)	Windchill Third Party Software	<i>Windchill Info*Engine Installation and Configuration Guide</i> , located in the Docs directory on the Windchill Info*Engine CD Required prerequisite for workgroup manager client applications only	Yes

<b>Database Software</b>			
The following required database software provides the Windchill database used with Windchill solutions. Installing the Oracle 9i or Oracle 10g software is a required prerequisite to installing Windchill components, unless you are running only Windchill Info*Engine.			
<b>Database Software</b>	<b>CD Name</b>	<b>Installation Instructions</b>	<b>Installed in Windchill Directory</b>
Oracle 9i or Oracle 10g	Usually purchased separately or bundled with Pro/INTRALINK 8.0	<i>Windchill Installation and Configuration Guide - Windchill</i> , located in the Docs directory on the Windchill Services CD	No
SQL Server	Software is purchased separately.	<i>Windchill Installation and Configuration Guide - Windchill</i> , located in the Docs directory on the Windchill Services CD	No
Pro/INTRALINK Oracle Software Assistant	Pro/INTRALINK Oracle Software Assistant (provided when bundled Oracle is purchased)	<i>Windchill Installation and Configuration Guide - Windchill</i> , located in the Docs directory on the Windchill Services CD	No
Oracle Configuration Utility	Windchill Third Party Software	<i>Windchill Installation and Configuration Guide - Windchill</i> , located in the Docs directory on the Windchill Services CD	N/A



SQL Server Configuration Utility	Windchill Third Party Software	<i>Windchill Installation and Configuration Guide - Windchill</i> , located in the Docs directory on the Windchill Services CD	N/A
----------------------------------	--------------------------------	--	-----

<b>Windchill Components</b>			
The following required and optional components provide a common platform for Windchill solutions.			
<b>Windchill Component</b>	<b>CD Name</b>	<b>Installation Instructions</b>	<b>Installed in Windchill Directory</b>
Windchill Info*Engine	Windchill Info*Engine	<i>Windchill Info*Engine Installation and Configuration Guide</i> , located in the Docs directory on the CD	Yes
Windchill Services	Windchill Services	<i>Windchill Installation and Configuration Guide - Windchill</i> , located in the Docs directory on the CD	Yes
ProductView Collaboration	Visualization - Windchill Support	<i>Windchill Installation and Configuration Guide - Visualization Services</i> , located in the Docs directory on the Windchill Services CD	Yes

## Windchill Solutions

The following Windchill solutions can be installed standalone or together in an integral environment as described in the following:

- Windchill Foundation & PDM and Windchill PDMLink cannot be installed together.
- When installing both Windchill Foundation & PDM and Windchill ProjectLink, you must install Windchill Foundation & PDM before installing Windchill ProjectLink.
- Windchill PDMLink and Windchill ProjectLink can be installed together in any order.
- Pro/INTRALINK 8.0 can only be installed as a standalone product.
- Arbortext Content Manager can only be installed as a standalone product.

<b>Windchill Solution</b>	<b>CD Name</b>	<b>Installation Instructions</b>	<b>Installed in Windchill Directory</b>
Windchill Foundation & PDM Closed-Loop Change Process Option	Windchill Foundation & PDM (1st of 2 CDs) (2nd of 2 CDs)	<i>Windchill Installation and Configuration Guide - Windchill</i> , located in the Docs directory on the Windchill Services CD	Yes
Windchill PDMLink	Windchill PDMLink	<i>Windchill Installation and Configuration Guide - Windchill</i> located in the Docs directory on the Windchill Services CD	Yes
Arbortext Content Manager	Arbortext Content Manager	<i>Windchill Installation and Configuration Guide - Windchill</i> located in the Docs directory on the Windchill Services CD	Yes
Windchill ProjectLink	Windchill ProjectLink	<i>Windchill Installation and Configuration Guide - Windchill</i> , located in the Docs directory on the Windchill Services CD	Yes
Pro/INTRALINK 8.0	Pro/INTRALINK 8.0	<i>Windchill Installation and Configuration Guide - Windchill</i> , located in the Docs directory on the Windchill Services CD	Yes

<b>Windchill PartsLink Catalog</b>			
Installing a Java 2 Software Development Kit (SDK) is a prerequisite to installing Windchill PartsLink Catalog. Information about J2SE SDK installation can be found in the <i>Windchill Info*Engine Installation and Configuration Guide</i> , located in the Docs directory on the Windchill Info*Engine CD.			
<b>Windchill PartsLink Catalog</b>	<b>CD Name</b>	<b>Installation Instructions</b>	<b>Installed in Windchill Directory</b>
Windchill PartsLink Catalog	Windchill PartsLink Catalog	<i>Windchill PartsLink Catalog Administrator's Guide</i> , located in the Docs directory on the CD	No

<b>Windchill Visualization</b>			
The following Visualization products can be optionally installed following the installation of any Windchill solution except Windchill PartsLink Catalog.			
<b>Visualization Product</b>	<b>CD Name</b>	<b>Installation Instructions</b>	<b>Server Installation is Installed in Windchill Directory</b>
ProductView Standard Edition and Realizer	Visualization - ProductView Client	<i>Windchill Installation and Configuration Guide -Visualization Services</i> , located in the Docs directory on the CD	Yes
ProductView Object Adapters for MCAD and Document Data	Visualization - Object Adapter Support	<i>Windchill Installation and Configuration Guide -Visualization Services Object Adapters</i> , located in the Docs directory on the CD	No
ProductView ECAD Viewer and Object Adapter	Visualization - ECAD Support	<i>Windchill Installation and Configuration Guide -Visualization Services Object Adapters</i> , located in the Docs directory on the CD	Viewer - Yes Object adapter - No

ProductView JT Object Adapter and JT Import Filter	Visualization - JT Adapter	<i>Windchill Installation and Configuration Guide -Visualization Services Object Adapters</i> , located in the Docs directory on the CD	Import filter - Yes Object adapter - No
ProductView Collective Document Viewing Option	Visualization - Collective Document Support	<i>Windchill Installation and Configuration Guide -Visualization Services</i> , located in the Docs directory on the CD	Yes
Adobe Acrobat	Visualization - Adobe Acrobat Support (3 CDs)	<i>Windchill Installation and Configuration Guide -Visualization Services</i> , located in the Docs directory on the CD	Yes
Adobe Distiller	Visualization - Adobe Distiller Support	<i>Windchill Installation and Configuration Guide -Visualization Services</i> , located in the Docs directory on the CD	No

<b>Windchill CAD Integration</b>			
The following CAD Integration components can be optionally installed following the installation of any Windchill solution (except Windchill PartsLink Catalog). The CAD integration component is installed on the server that end users can access to do a desktop installation.			
<b>CAD Integration</b>	<b>CD Name</b>	<b>Installation Instructions</b>	<b>Installed in Windchill Directory</b>
Windchill Workgroup Manager for CADDs	Windchill Workgroup Manager for CADDs	<i>Workgroup Manager for CADDs Installation and Configuration Guide</i> , located in the Docs directory on the CD	Yes
Windchill Workgroup Manager for CATIA V5	Windchill Workgroup Manager for CATIA V5	<i>Workgroup Manager for CATIA V5 Installation and Configuration Guide</i> , located in the Docs directory on the CD	Yes
Windchill Workgroup Manager for CATIA V4	Windchill Workgroup Manager for CATIA V4	<i>Workgroup Manager for CATIA V4 Installation and Configuration Guide</i> , located in the Docs directory on the CD	Yes
Windchill Workgroup Manager for AutoCAD  Windchill Workgroup Manager for I-DEAS  Windchill Workgroup Manager for SolidWorks  Windchill Workgroup Manager for Autodesk Inventor	Windchill Workgroup Managers for: AutoCAD, I-DEAS, SolidWorks, Autodesk Inventor, Unigraphics	<i>Workgroup Manager for AutoCAD Installation and Configuration Guide</i>  <i>Workgroup Manager for I-DEAS Installation and Configuration Guide</i>  <i>Workgroup Manager for SolidWorks Installation and Configuration Guide</i>  <i>Workgroup Manager for Autodesk Inventor Installation and Configuration Guide</i>  <i>Workgroup Manager for Unigraphics Installation</i>	Yes

Windchill Workgroup Manager for Unigraphics		<i>and Configuration Guide</i> All guides are located in the Docs directory on the CD	
Windchill Workgroup Manager for ECAD	Windchill Workgroup Manager for ECAD	<i>Workgroup Manager for ECAD Installation and Configuration Guide</i> , located in the Docs directory on the CD	Yes

<b>Team Data Manager Integrations</b>			
The following Team Data Manager integrations can be optionally installed following installation of any Windchill solution (except Windchill PartsLink Catalog).			
<b>Team Data Manager Integration</b>	<b>CD Name</b>	<b>Installation Instructions</b>	<b>Installed in Windchill Directory</b>
	Windchill Pro/INTRALINK Gateway	<i>Windchill Pro/INTRALINK Gateway Installation and Configuration Guide</i> , located in the Docs directory on the CD	Yes
	Windchill Pro/INTRALINK 3.3 Application Server or Windchill Pro/INTRALINK 3.4 Application Server	<i>Windchill Pro/INTRALINK Gateway Installation and Configuration Guide</i> , located in the Docs directory on the Windchill Pro/INTRALINK Gateway CD. See the installation guide for specific date code compatibility information.	No
Windchill Optegra Gateway	Windchill Optegra Gateway	<i>Windchill Optegra Gateway Installation and Configuration Guide</i> , located in the Docs directory on the CD	Yes

<b>Windchill Enterprise Systems Integration</b>			
The following Windchill Enterprise Systems Integration (Windchill ESI) components can optionally be installed after the installation of Windchill PDMLink or Windchill Foundation & PDM.			
<b>Windchill ESI Component</b>	<b>CD Name</b>	<b>Installation Instructions</b>	<b>Installed in Windchill Directory</b>
TIBCO BusinessWorks  TIBCO Enterprise for JMS  TIBCO TurboXML	Windchill ESI Integration Suite	Either the <i>Windchill Enterprise Systems Integration Installation and Configuration Guide - SAP</i> or the <i>Windchill Enterprise Systems Integration Installation and Configuration Guide - Oracle Applications</i>  The SAP guide is located in the Docs directory on the Windchill ESI Business Logic for SAP R/3 CD and the Oracle Applications guide is located in the Docs directory on the Windchill ESI Business Logic for Oracle Applications CD	No
Windchill ESI Business Logic for SAP R/3	Windchill ESI Business Logic for SAP R/3	<i>Windchill Enterprise Systems Integration Installation and Configuration Guide - SAP</i> , located in the Docs directory on the CD	No
TIBCO Adapter for R/3	Windchill ESI Adapter for SAP R/3	<i>Windchill Enterprise Systems Integration Installation and Configuration Guide - SAP</i> , located in the Docs directory on the Windchill ESI Business Logic for SAP R/3 CD	No
Windchill ESI Business Logic for Oracle Applications	Windchill ESI Business Logic for Oracle Applications	<i>Windchill Enterprise Systems Integration Installation and Configuration Guide - Oracle Applications</i> , located in the Docs directory on the CD	No
TIBCO Adapter for Oracle	Windchill ESI Adapter for	<i>Windchill Enterprise Systems Integration Installation and</i>	No

Applications	Oracle Applications	<i>Configuration Guide - Oracle Applications</i> , located in the Docs directory on the Windchill ESI Business Logic for Oracle Applications CD	
--------------	---------------------	---	--

<b>Windchill Data Engineering Tools</b>			
Windchill CounterPart must be installed with Windchill PartsLink Catalog. It can also be optionally installed with Windchill PDMLink or Windchill Foundation & PDM. Windchill Classification Tools can be optionally installed with Windchill Foundation & PDM.			
<b>Windchill Data Engineering Tools</b>	<b>CD Name</b>	<b>Installation Instructions</b>	<b>Installed in Windchill Directory</b>
Windchill CounterPart	Windchill CounterPart	<i>Windchill CounterPart Installation Guide</i> , located in the Docs directory on the CD	No
Windchill Classification Tools	Windchill Classification Tools	<i>Windchill Classification Tools Installation Guide</i> , located in the Docs directory on the CD	Yes
Windchill Archive	Windchill Archive	<i>Windchill Archive Administrator's Guide</i> , located in the Docs directory on the CD	No



<b>Windchill Info*Engine Adapters</b>			
The following Windchill Info*Engine adapters can be optionally installed after installing Windchill PDMLink or Windchill Foundation & PDM.			
<b>Windchill Info*Engine Adapter</b>	<b>CD Name</b>	<b>Installation Instructions</b>	<b>Installed in Windchill Directory</b>
Windchill Info*Engine DOORS Adapter	Windchill Info*Engine DOORS Adapter	<i>DOORS Adapter Guide</i> , located in the Docs directory on the CD	Yes / No
Windchill Info*Engine Metaphase Adapter	Windchill Info*Engine Metaphase Adapter	<i>Metaphase Adapter Guide</i> , located in the Docs directory on the CD	Yes / No
Windchill Info*Engine JDBC Adapter	Windchill Info*Engine JDBC Adapter	<i>JDBC Adapter Guide</i> , located in the Docs directory on the CD	Yes / No
Windchill Info*Engine Enterprise Business Applications Interface Adapter	Windchill Info*Engine Enterprise Business Applications Interface Adapter	<i>EBAI Adapter Guide</i> , located in the Docs directory on the CD	Yes / No
Windchill Info*Engine Java Adapter Development Kit	Windchill Info*Engine Java Adapter Development Kit	<i>Info*Engine Java Adapter Development Kit Programming Reference</i> , located in the Docs directory on the CD	No

<b>Windchill Customization Tools</b>			
The following customization tool can be optionally installed after installing Windchill PDMLink, Windchill ProjectLink, or Windchill Foundation & PDM.			
<b>Customization Tool</b>	<b>CD Name</b>	<b>Installation Instructions</b>	<b>Installed in Windchill Directory</b>
Windchill Information Modeler	Windchill Information Modeler	<i>Windchill Installation and Configuration Guide - Information Modeler</i> , located in the Docs directory on the Windchill Services CD	Yes
Rational Rose Modeler Edition for Windows	Windchill Information Modeler	<i>Windchill Installation and Configuration Guide - Information Modeler</i> , located in the Docs directory on the Windchill Services CD	No

<b>Multilanguage Support</b>			
The following language components can be installed after installing the English version of many Windchill products. For further information, see the Windchill 8.0 Language Matrix at <a href="http://www.ptc.com/appserver/cs/doc/refdoc.jsp">http://www.ptc.com/appserver/cs/doc/refdoc.jsp</a> .			
<b>Languages</b>	<b>CD Name</b>	<b>Installation Instructions</b>	<b>Installed in Windchill Directory</b>
French German Italian Spanish	Windchill MultiLanguage Pack (CD 1)	<i>Windchill Installation and Configuration Guide -Windchill</i> , located in the Docs directory on the Windchill Services CD	Yes
Japanese Korean Simplified Chinese Traditional Chinese	Windchill MultiLanguage Pack (CD 2)	<i>Windchill Installation and Configuration Guide -Windchill</i> , located in the Docs directory on the Windchill Services CD	Yes

<b>Windchill 8.0 Maintenance Releases</b>			
<p>Maintenance releases provide code corrections for critical issues. Maintenance releases are planned to occur quarterly. Customers should look to this vehicle to obtain fixes for SPRs they have reported to PTC. Maintenance releases also provide support for upgrades, optional products, and third party products. For information on what is provided with maintenance releases, see the <i>Windchill Maintenance Installation and Configuration Guide</i>. This guide is on the Windchill Service Pack CD and also on the PTC Online Support Web page for reference documents (<a href="http://www.ptc.com/appserver/cs/doc/refdoc.jsp">http://www.ptc.com/appserver/cs/doc/refdoc.jsp</a>).</p>			
<b>Windchill Maintenance Release</b>	<b>CD Name</b>	<b>Installation Instructions</b>	<b>Installed in Windchill Directory</b>
Windchill Service Pack	Windchill Service Pack	<i>Windchill Maintenance Installation and Configuration Guide</i> , located in the Docs directory on the CD	Installed multiple places. See <i>Windchill Maintenance Installation and Configuration Guide</i> for details.