

EPMDocument DRW PDF or PLT Download to Windchill Server or Client side Drive/Folder location.

Where system is setup for DRW publish to PDF or OOTB HPGL/PLT.

From a Product/Library Page, when selecting the “Actions” Menu of an CAD Doc (EPMDocument), you will see “Download PDF or PLT” option (right below the “Save As”.

The screenshot displays the 'Folder Contents' window in Windchill, showing 13 objects. The selected object is 'test_djett_rod_plate_asm_01'. A context menu is open, showing various actions available for this object. The 'Download PDF or PLT' option is highlighted, located below 'Save As' and above 'Manage Security'.

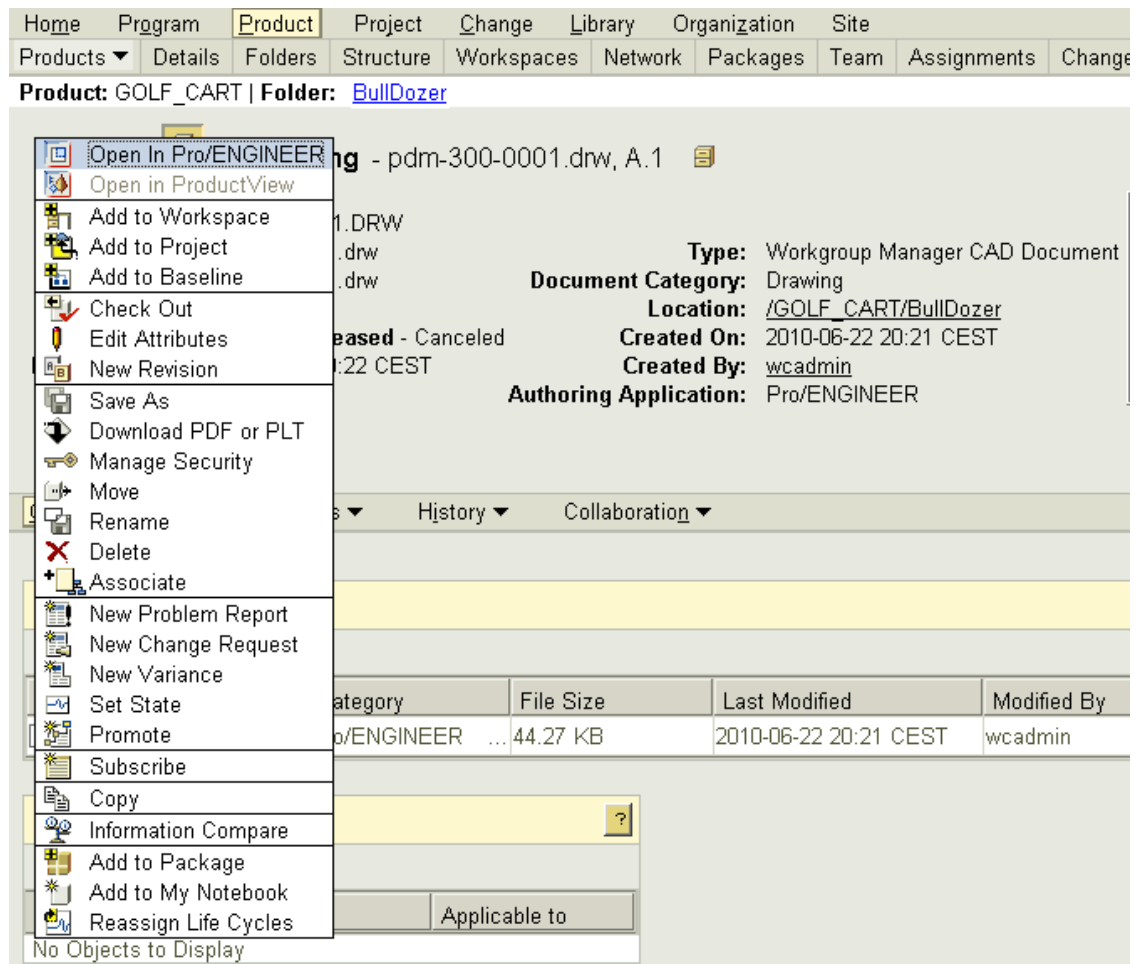
Number	Name	Actions	Version
0000000041	test01.doc	Actions	A.1
0000000022	TXT_IVV	Actions	A.1
0000000025	test_djett_rod_plate_asm_01	Actions	A.1
0000000024	test_djett_rod_plate_01		
0000000023	test_djett_rod_01		
0000000063	test_djett_rod_plate_01		
0000000062	test_djett_rod_01		
0000000061	test_djett_plate_01		
0000000021	test_djett_plate_01		
0000000001	std_rod_djett		
	BullDozer		
	Design		
	Manufacturing		

Context Menu Options:

- View Information
- Open In Pro/ENGINEER
- Open in ProductView
- Add to Workspace
- Add to Project
- Add to Baseline
- Check Out
- Edit Attributes
- New Revision
- Save As
- Download PDF or PLT
- Manage Security
- Move
- Rename
- Delete
- Associate
- New Problem Report
- New Change Request
- New Variance
- Set State
- Promote
- Subscribe
- Copy
- Information Compare
- Add to Package
- Add to My Notebook
- Reassign Life Cycles

Powered by Windchill® - About Windchill Copyright © 2008 Parametric Technology Corporation

You can also run the application from the Actions Menu in a Details/Info page of a CAD Doc (EPMDocument) DRW:



To configure the application to download to a specific folder on the Windchill Server, in the JSP make sure the String dlLoc is set to the desired folder:

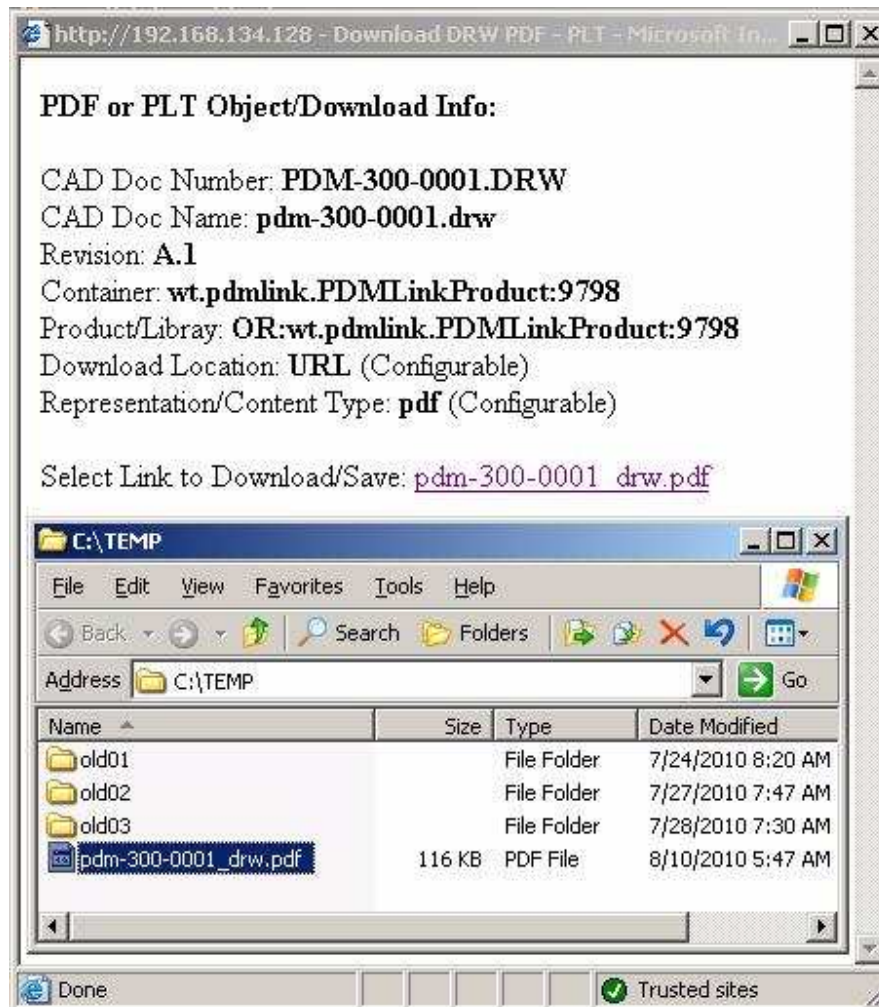
dlLoc = "C:\\TEMP"; or set the string to a shared folder: dlLoc = "Z:\\PDFs";

Or allow the user to select the download folder location, by setting the string to URL: dlLoc = "URL";

Depending on whether your Windchill system is configured to print to PDF or PLT, you control this through another JSP String: String conType = "pdf";

After selecting the “Download DRW PDF or PLT” Action Menu Option, a popup window will appear, it will display “Object Info” & status of download.

After the last line: “Select Link to Download/Save:”, there will be an active hyperlink to the DRW associated Application Data/Representation (PDF or PLT). Selecting that link will prompt a Save window, where the user can select the download location on their local machine.



If you change the dlLoc value to a specific folder, the above page will show different results & should have already downloaded the Representation to that location.

Updates will be located on my site:

http://www.datajett.com/windchill/wc_dev/saverep/

For any questions, suggestions, errors contact me.

Lawrence Jett (Larry) @ datajett@aol.com